

1 Introduction

The draft Regional Spatial Strategy (RSS) 14 policy WAT2 (Water Resource and Wastewater Infrastructure Development) requires Water Cycle Studies to be done to:

- Ensure a co-ordinated approach to identify water supply and waste water infrastructure to support development;
- Avoid negative impact on European sites of nature conservation (eg Broads and Wensum SACs);
- Provide an evidence base for Local Development Documents to site development so they can:
 - Maximise potential of existing infrastructure;
 - Minimise need for new infrastructure.

1.1 Purpose of this Report

The purpose of this report is to provide a Stage 1 Water Cycle Study for the Greater Norwich Development Partnership (GNDP) in light of their required housing and employment growth targets, as set out in the Regional Spatial Strategy (RSS). It is intended to provide the following:

- A review of the growth areas in terms of the integrated water related features, such as flood risk, water supply, wastewater treatment and the environment;
- Identify, using a traffic light system, the level of risk for each of these growth areas to enable a visual representation of the suitability of development within these areas;
- Identify the financial contribution methodologies which could be sourced from third parties;
- Undertake an outline Appropriate Assessment of the findings of the study¹;
- Provide a scope and fee proposal for Stage 2 of the Water Cycle Study.

The targets which have been provided for the Study Area are outlined below:

¹ The Appropriate Assessment for the RSS had not been agreed at the time of writing

Table 1-1: Growth Development Targets – 2031

Policy Area	Growth Target
Norwich Policy Area	44,500
Rural Policy Area	6,500
TOTAL	51,000

1.2 Local Development Framework

1.2.1 Outline

The Department for Communities and Local Government (DCLG) are responsible for managing Local Government and, as such, the associated planning guidance. A Local Development Framework (LDF) is the spatial planning strategy introduced in England and Wales by the Planning and Compulsory Purchase Act 2004 and given in detail in Planning Policy Statement (PPS) 12. A Joint Core Strategy (JCS) is being prepared for the Local Council Areas of Broadland, Norwich and South Norfolk that includes the Norwich Policy Area².

1.2.2 Links with other studies

It is intended that the LDF documents will be informed by the following documents:

- The Greater Norwich Water Cycle Study;
- The Greater Norwich Growth Infrastructure Study;
- The Greater Norwich Green Infrastructure Study;
- The Greater Norwich Strategic Flood Risk Assessment;
- Employment Sites Study (still be commissioned);
- Greater Norwich Housing Market Assessment (support by the Option Research Services ORS Housing Need and Stock Condition Study);
- South Norfolk and Broadland's Open Spaces, indoor sports and community recreation assessment (Norwich's assessment is shortly to be completed)

1.3 Stakeholders

This Water Cycle Study is being undertaken on behalf of the GNDP, which is made up of the following stakeholders:

- Norwich City Council (lead Local Authority for this Study);
- South Norfolk Council;
- Broadland District Council;

² See Section 2.2

- Norfolk County Council;
- The Broads Authority (as supporting partners)

Furthermore the following parties have been involved in the consultation process:

- Environment Agency;
- Natural England;
- Anglian Water Services (AWS);

1.4 Study Area

The Study Area encompasses the following areas:

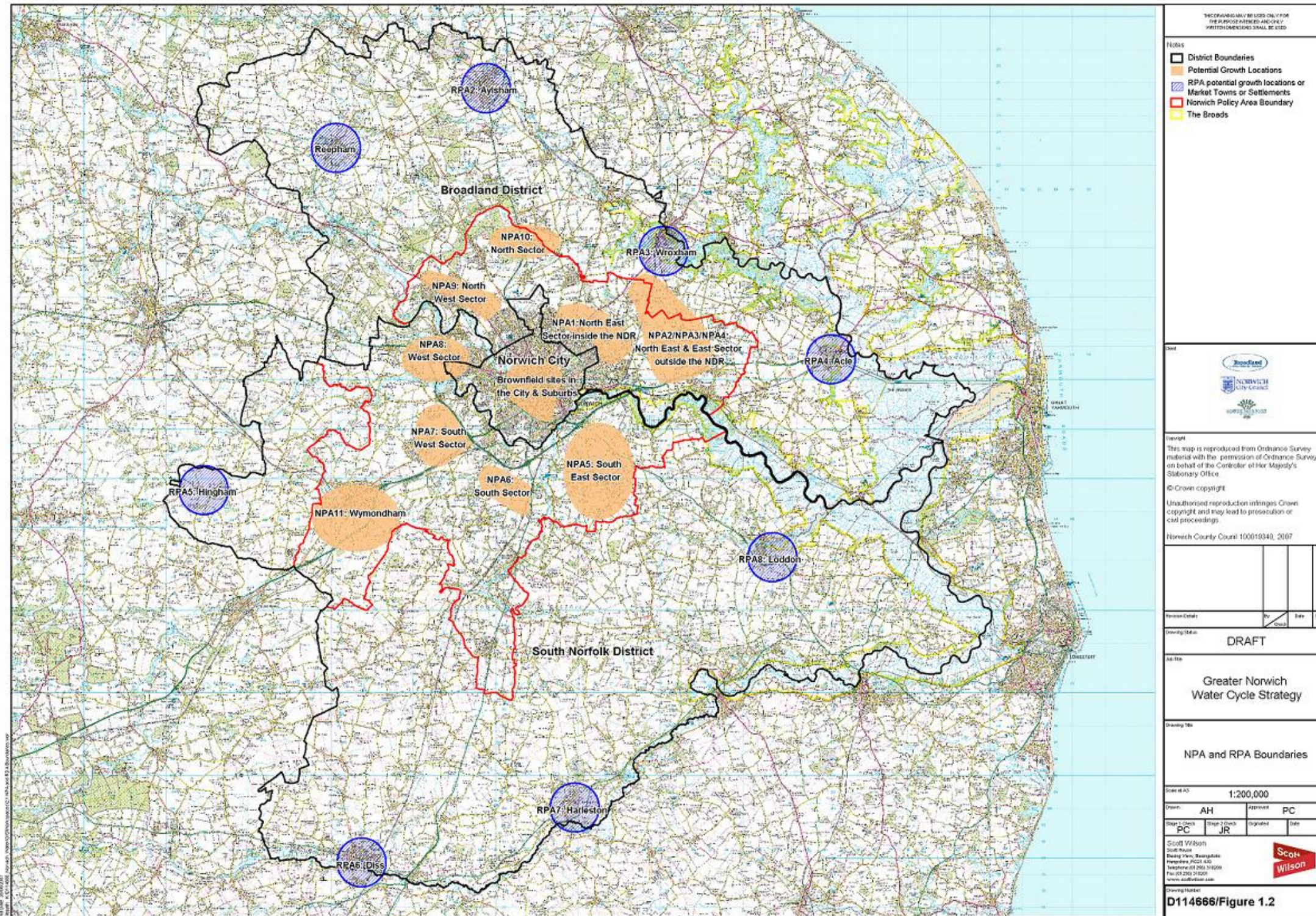
- Broadland District Council
- South Norfolk District Council
- Norwich City Council
- The Broads Authority (within the above 3 districts)

However, as river systems are not discriminative of administrative boundaries, and there are likely to be relationships between other catchments and the Study Area, as well as the Study Area impacting on third parties downstream (such as The Broads). Therefore, where necessary, the Study Area will include the areas outside of the three local authority boundaries. Figure 1.1 shows the three administrative local authority boundaries which relate to the proposed growth targets.

Figure 1-1: Greater Norwich Water Cycle Study Area



Figure 1-2: NPA and RPA Policy Areas



THIS DRAWING MAY BE USED ONLY FOR THE PURPOSES INTENDED AND ONLY WITH DIMENSIONS SHALL BE USED.

Notes

- District Boundaries
- Potential Growth Locations
- RPA potential growth locations or Market Towns or Settlements
- ▭ Norwich Policy Area Boundary
- The Broods

Scale

Copyright

This map is reproduced from Ordnance Survey material with the permission of Ordnance Survey on behalf of the Controller of Her Majesty's Stationary Office.

© Crown copyright.

Unauthorised reproduction infringes Crown copyright and may lead to prosecution or civil proceedings.

Norwich County Council 100010340, 2007

Revision Control	By	Date	Notes

Drawing Status

DRAFT

Project Title

Greater Norwich Water Cycle Strategy

Drawing Title

NPA and RPA Boundaries

Scale of A3

1:200,000

Drawn	Approved
AH	PC

Stage 1 Check	Stage 2 Check	Drafted	Date
PC	JR		

Scott Wilson
Scott Wilson
Building 750, Buntingford
Buntingford, Cambridgeshire
Telephone: 01223 312000
Fax: 01223 312001
www.scottwilson.com

Scott Wilson logo

Drawing Number

D114666/Figure 1.2