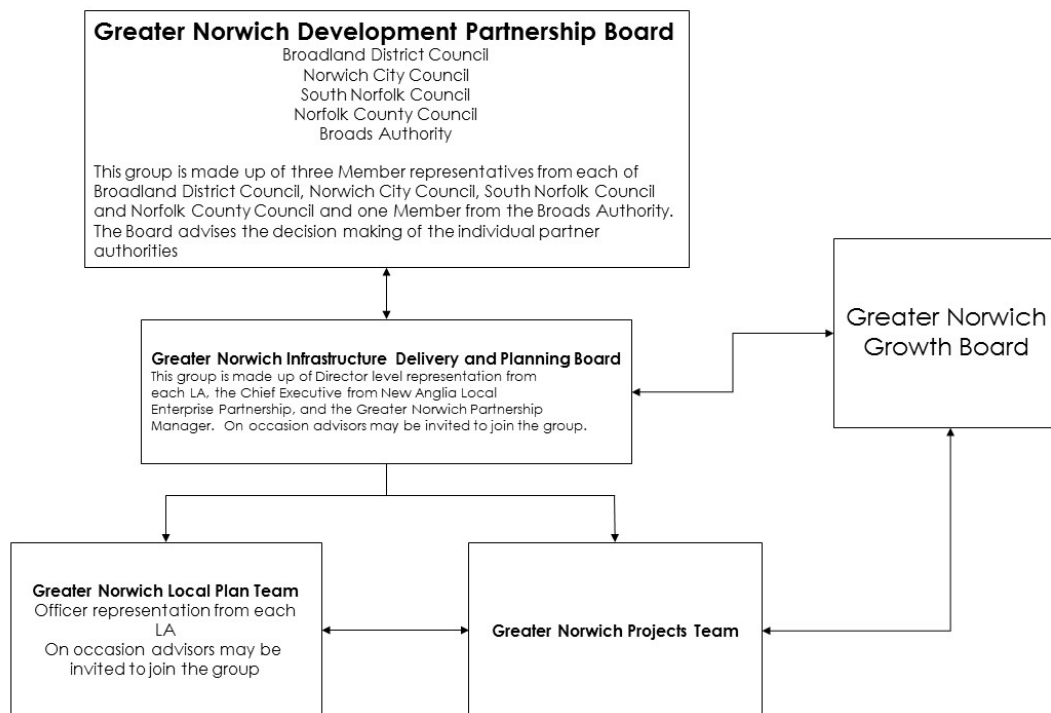


## Greater Norwich Development Partnership Board Terms of Reference

---



### The Greater Norwich Development Partnership Board

The Greater Norwich Development Partnership Board will exercise political Leadership for the planning activities carried out jointly by the Greater Norwich Local Planning Authorities. This group is made up of three members from Broadland District Council, Norwich City Council, South Norfolk Council, Norfolk County Council and a member from the Broads Authority. The group is supported in its role by the Director level representation from each Local Authority and a series of advisors who will be seconded into the group when necessary.

### Membership of the GNDP Board

Broadland District Council	}	Up to three members from each Council, including Leader and Planning Portfolio
Norwich City Council		
South Norfolk Council		
Norfolk County Council		
Broads Authority		Up to three members including the Chair of EDT committee one member

**Substitutes:** Members may submit substitutes when unable to attend themselves in agreement with the chair

**Frequency:** Meetings are held quarterly or more frequently as required.

Meetings will be held in public. The public may submit questions to the Board in respect of the development of the Greater Norwich Local Plan (GNLP). Questions are required to be submitted three working days before the meeting to the Greater Norwich Planning Policy Team Manager. The time allowed for questions and responses will be limited to 15 minutes in total. There is no guarantee that all questions will be able to be answered in the given time and it will be up to the discretion of the Chair on the day as to whether the time available for questions should be extended. Questions and the responses will be minuted.

### **Responsibilities**

- To prepare and monitor a joint Local Plan for the three district local planning authority areas of Broadland, City of Norwich and South Norfolk, to include integrated land-use and transport policies;
- To oversee the work of the Greater Norwich Local Plan team and associate bodies and ensure all bodies work effectively;
- To make recommendations to the Councils and Broads Authority on any wider planning matter affecting the Broadland, City of Norwich and South Norfolk administrative areas;
- To advise on the development of the Local Transport Plan (LTP) implementation strategies and on future reviews of the LTP relevant to the area, including the Norwich Area Transportation strategy (NATS);
- To facilitate joint working between the local planning authorities and the local transportation authority on matters of common interest and benefit; and
- To ensure the Greater Norwich Infrastructure Plan reflects the needs of the Greater Norwich Local Plan.

### **The Greater Norwich Infrastructure Delivery and Planning Board**

The Directors are responsible for directing the Greater Norwich strategic planning activity on behalf of the Authorities and ensuring it meets the objectives.

### **Membership of the Greater Norwich Infrastructure Delivery and Planning Board**

Broadland District Council	Head of Planning
Norwich City Council	Executive Head of Regeneration & Development
South Norfolk Council	Director of Growth and Localism
Norfolk County Council	Executive Director of Community and Environmental Services
Broads Authority	Director of Planning and Resources
New Anglia Local Enterprise Partnership	Managing Director

(Updated: January 2017)

Greater Norwich Partnership

Partnership Manager

**Substitutes:** Director's may submit substitutes when unable to attend themselves

**In attendance at Board meetings**

Representatives from the Greater Norwich Local Plan Group and the Greater Norwich Projects Team will attend when required.