

Greater Norwich  
Development Partnership

---

**Greater Norwich  
Employment Growth &  
Sites and Premises  
Study**

---

Appendix 1: Annexes to  
Employment Growth  
Study

Greater Norwich  
Development Partnership

---

**Greater Norwich  
Employment Growth &  
Sites and Premises  
Study**

---

Appendix 1: Annexes to  
Employment Growth  
Study

May 2008

**Ove Arup & Partners Ltd**  
13 Fitzroy Street,  
London W1T 4BQ  
Tel +44 (0)20 7636 1531 Fax +44 (0)20 775  
www.arup.com

This report takes into account the  
particular instructions and requirements  
of our client.

It is not intended for and should not be  
relied upon by any third party and no  
responsibility is undertaken to any third  
party

Job number 124351

Job title	Greater Norwich Employment Growth & Sites and Premises Study	Job number	124351
-----------	--	------------	--------

Document title	Appendices to Employment Growth Study	File reference	
----------------	---------------------------------------	----------------	--

Document ref

Revision	Date	Filename	Norwich Employment Growth Study - Appendices 18 April 08.doc		
Draft 1	29/05/08	Description	First draft		
			Prepared by	Checked by	Approved by
		Name	Fionn O'Sullivan, Graham Gudgin	Fionn O'Sullivan	Christopher Tunnell
		Signature			
Issue	29/05/08	Filename	Appendix 1 Norwich Employment Growth Study Appendices FINAL.doc		
		Description			
			Prepared by	Checked by	Approved by
		Name			
		Signature			
		Filename			
		Description			
			Prepared by	Checked by	Approved by
		Name			
		Signature			
		Filename			
		Description			
			Prepared by	Checked by	Approved by
		Name			
		Signature			

Issue Document Verification with Document

## Contents

	Page
1	2
2	4
3	14
4	26
5	27
6	35

## 1 Consultees

We are grateful to the following people who provided their views through interviews, participation in the project Steering Group or consultation events held with businesses and key stakeholder organisations.

In addition to the named individuals below a large number of business people and councillors from the three districts attended presentations during the course of the study and we are grateful for the input we received during these sessions.

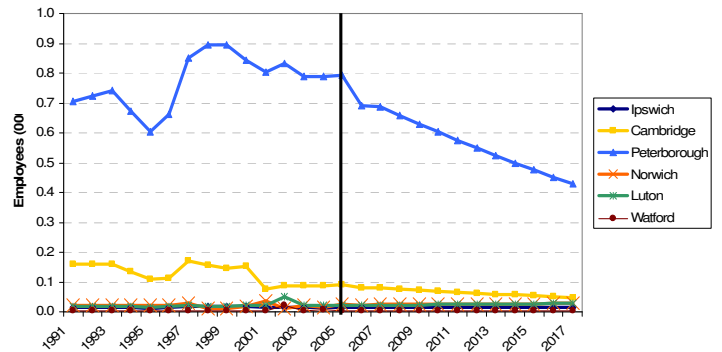
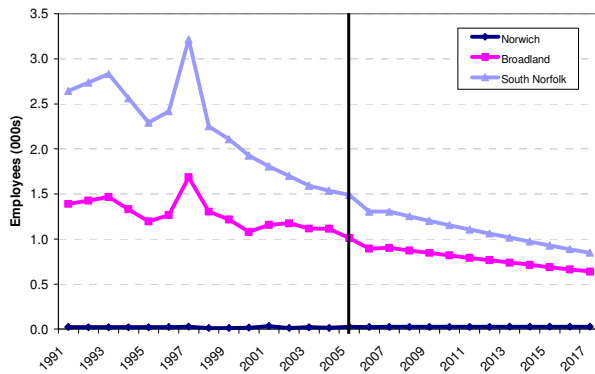
Marcus Armes	CRed
Brian Ayers	Norfolk County Council
Tim Bacon	Norwich City Council
John Best	East of England Energy Group
Derek Blake	South Norfolk Council
Natalie Blaken	East of England Development Agency
Mark Boyd	Aquaterra Energy
Laurence Brooks	Performance Plus
Roger Burroughs	Broadland District Council
Ruth Carey	Greater Norwich Development Partnership
Ian Coldicott	Norfolk County Council
Simon Coward	Hethel Engineering Centre
Graham Creelman	Graham Creelman Associates Ltd
Dr Robin Daniels	NRP Enterprise Ltd
David Dukes	Norfolk County Council
Marjorie Eade	Financial Industries Group
Sandra Eastaugh	Greater Norwich Development Partnership
John Farley	Dunnella Ltd
Ian Findlater	May Gurney
Emma Finn	Shaping Norfolk's Future - Investment & Promotion
Andi Gibbs	Art Architecture
Alan Gomm	South Norfolk District Council
Anna Graves	Norwich City Council
Robin Hall	The Forum Trust
Michael Hand	Norfolk County Council
Richard High	Shaping Norfolk's Future
David Harvey	Harvey & Co
Chris Hill	Broadland District Council
Caroline Jarrold	Norwich Economy Round Table & Visit Norwich
Mark Jeffries	Mills & Reeve

---

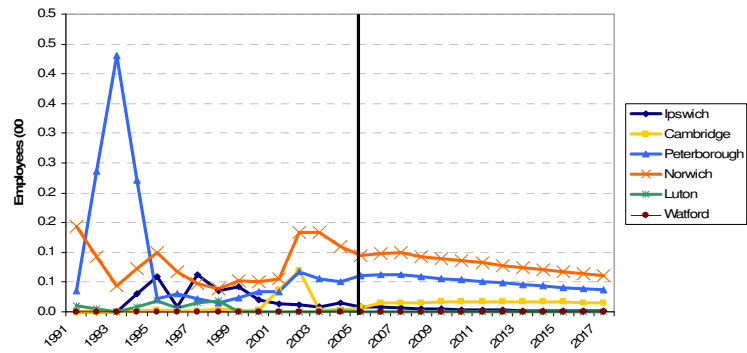
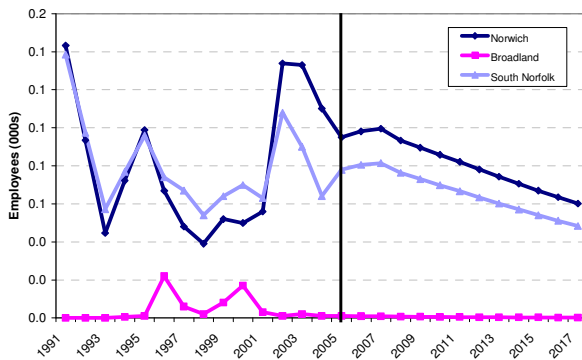
Richard Jenner	Norwich Airport
David Jones	Bayer Crop Science
Martin Lake	Federation of Small Businesses
Chris Lawrence	PricewaterhouseCoopers
David Lawrence	Easton Agricultural College
Michael Loveday	HEART
Michael Mack	Rural Norfolk Business Advice Service
Peter Mitchell	City Centre Management Partnership
Phil Morris	Norfolk County Council
Michael Nutt	Visit Norwich
Onno Pietersma	KLM Engineering
Wendy Pontin	Norfolk County Council
Chris Popplewell	Norwich City Council
Sharon Quantrell	Norwich City Council
Matthew Ramsell	Art Architecture
David Reger	Bernard Matthews
William Router	Bidwells
Professor David Scott	Norfolk & Norwich University Hospital
Adrian Tink	Norwich Union
Alex Tosh	Creative Sponge
Sue Tuckett	Norwich School of Art & Design
Caroline Williams	Norfolk Chamber
John Woods	Moneyfacts
Andrew Wood	Steeles
Sjad Zaman	East of England Development Agency

## 2 Additional Forecast data

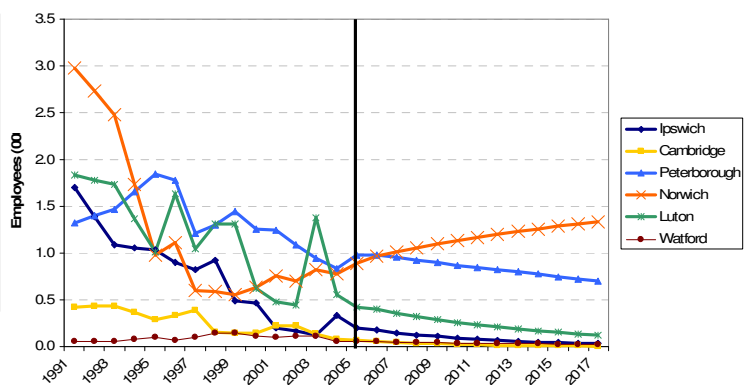
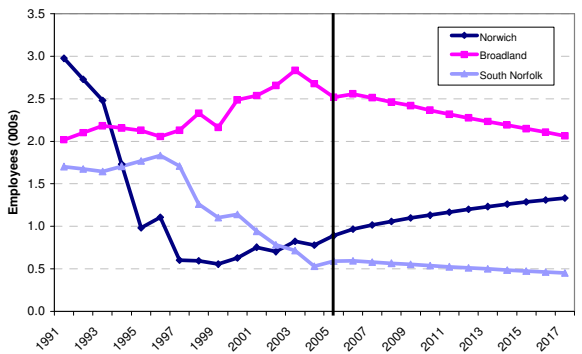
### Employees in agriculture



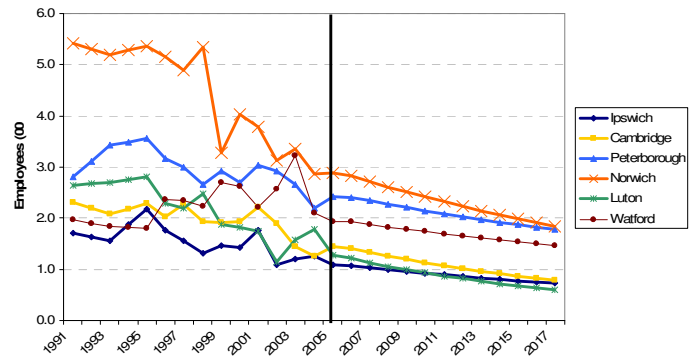
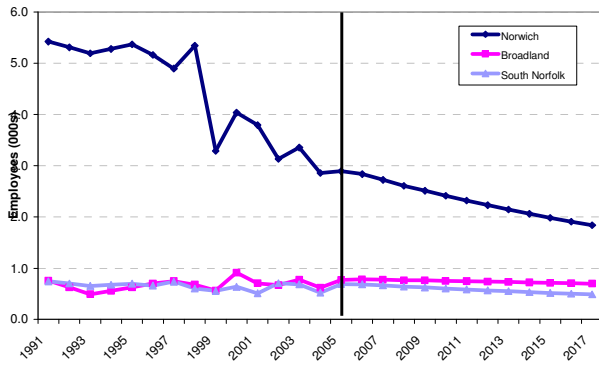
### Employees in extraction



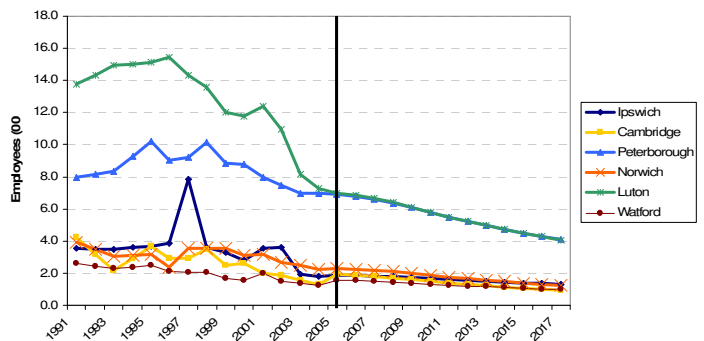
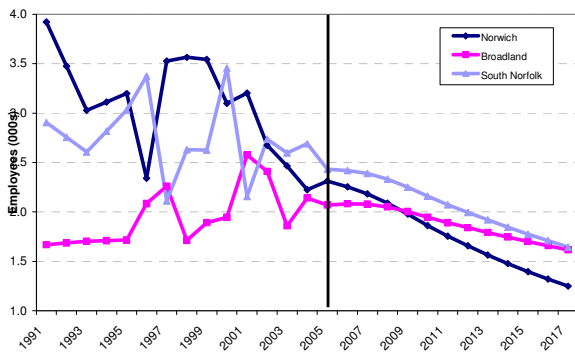
### Employees in food, drink & tobacco



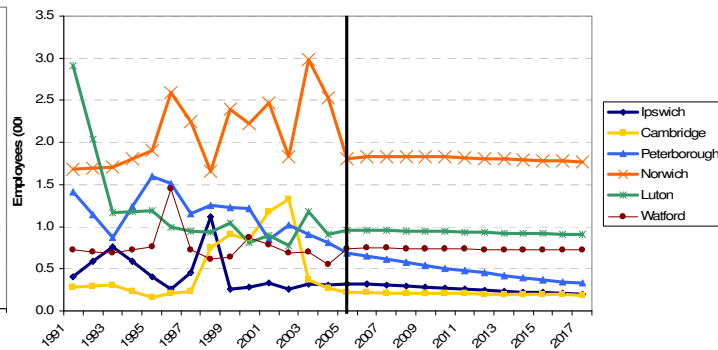
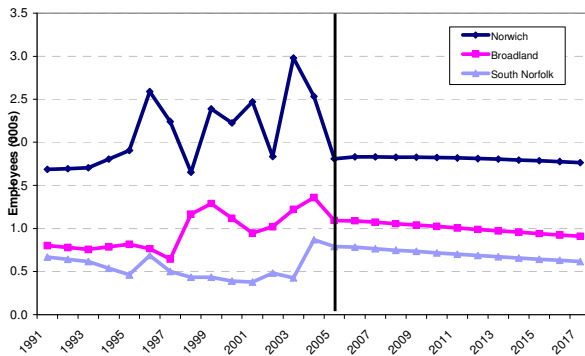
**Employees in other low tech manufacturing**



**Employees in metals & engineering**

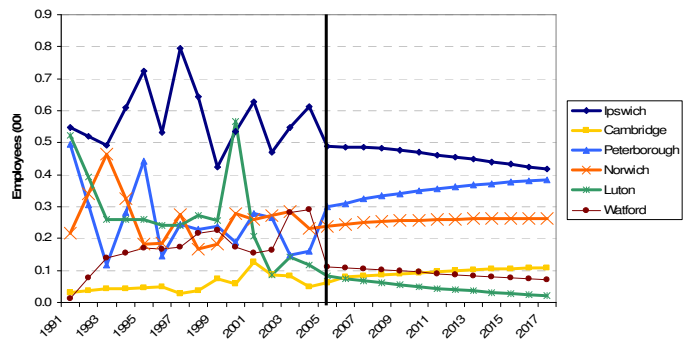
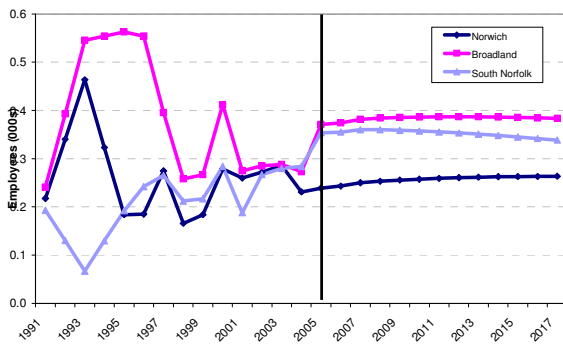


**Employees in chemicals & process industries**

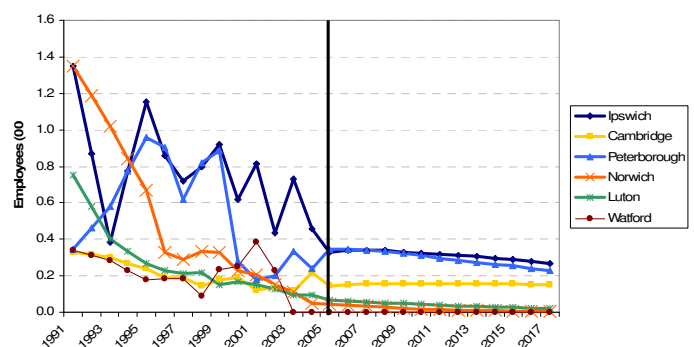
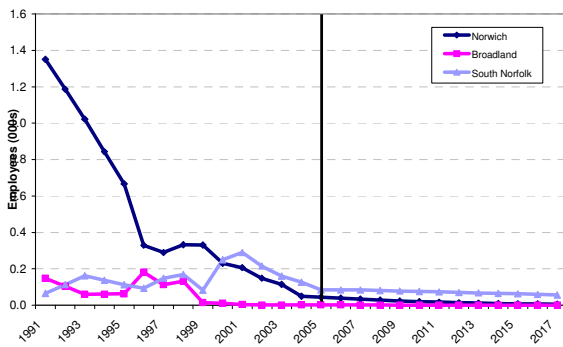




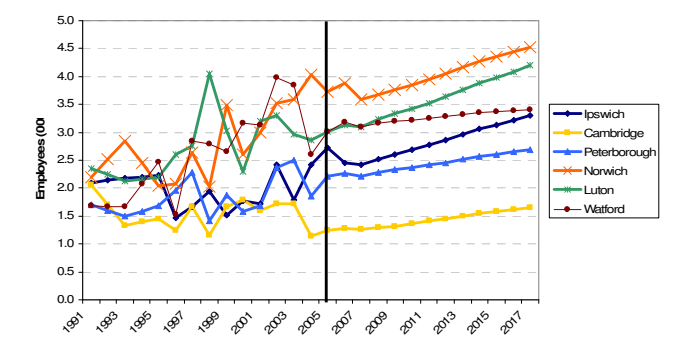
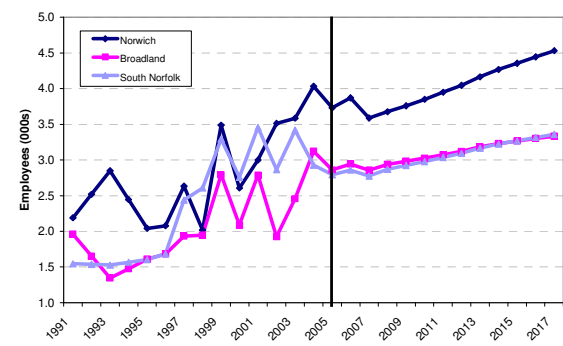
**Employees in other manufacturing & recycling**



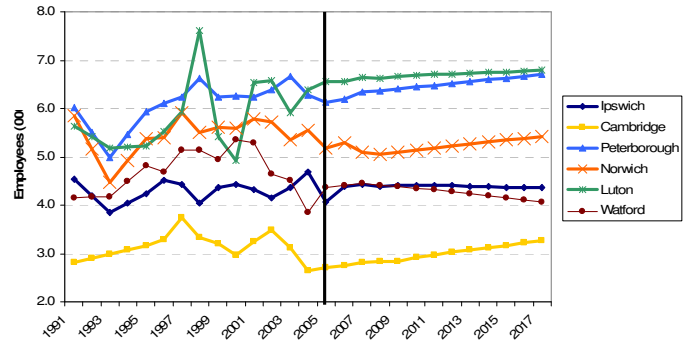
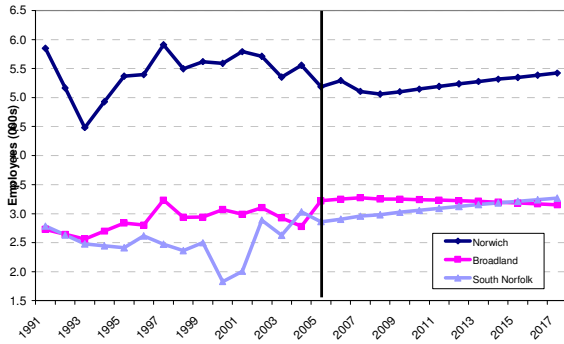
**Employees in utilities**



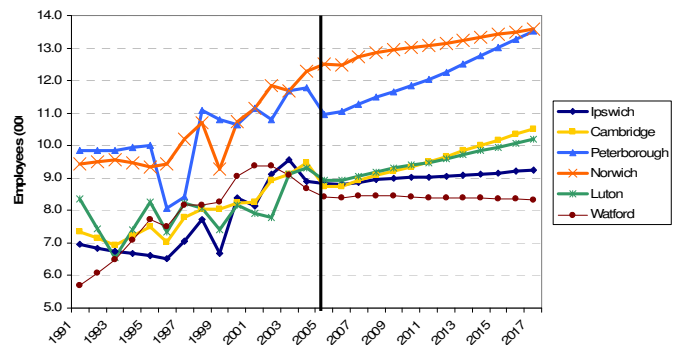
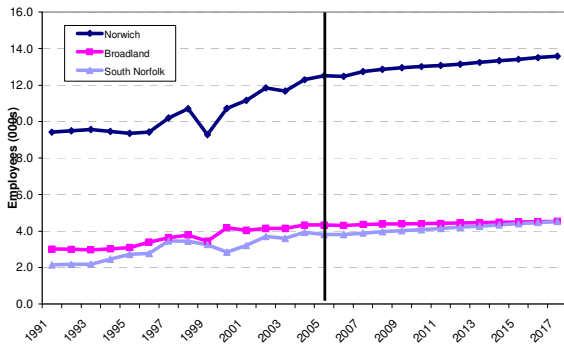
**Employees in construction**



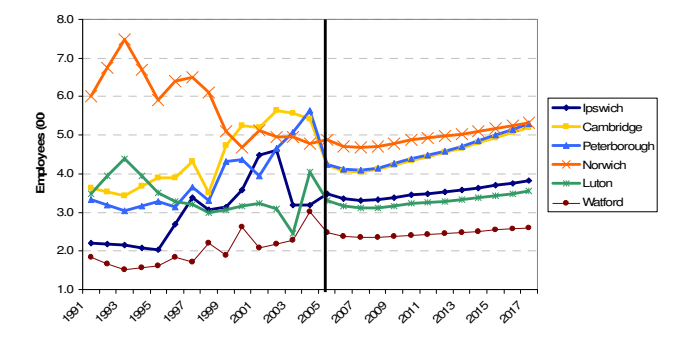
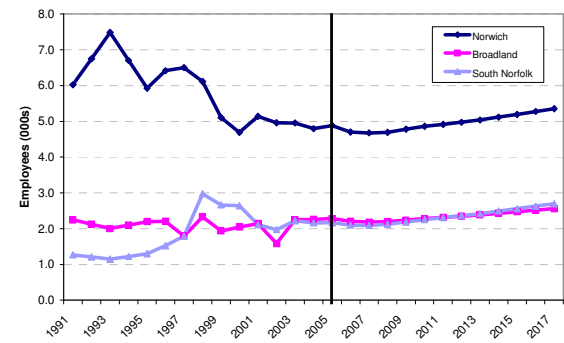
**Employees in wholesale, distribution, maintenance and sale of motor vehicles**



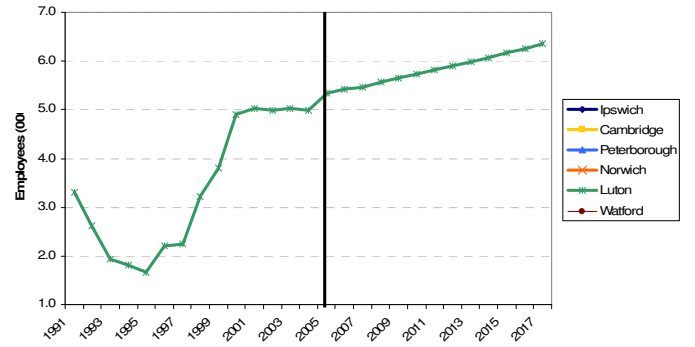
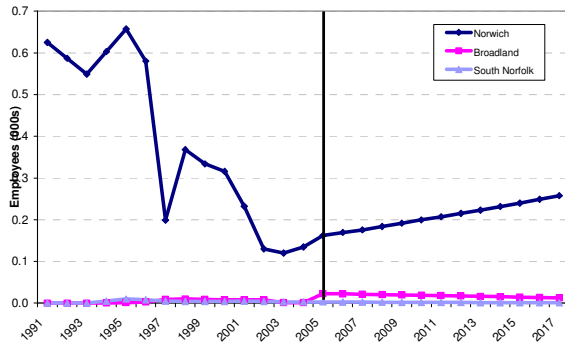
**Employees in retailing**



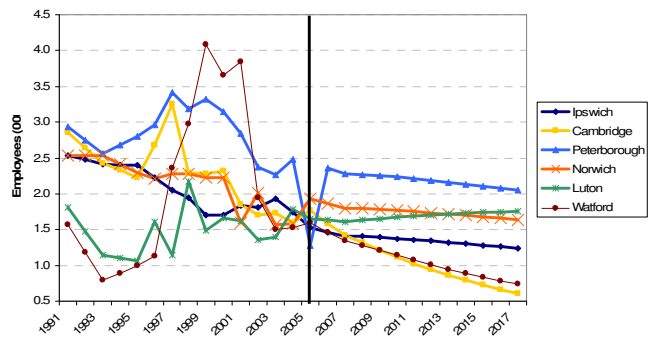
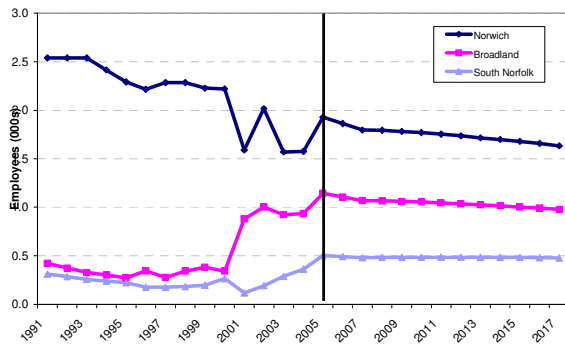
**Employees in hotels & catering**



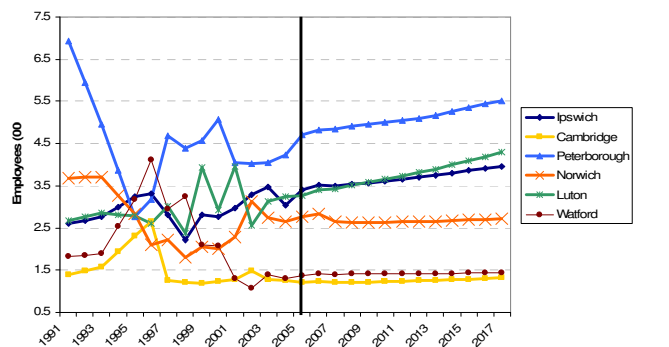
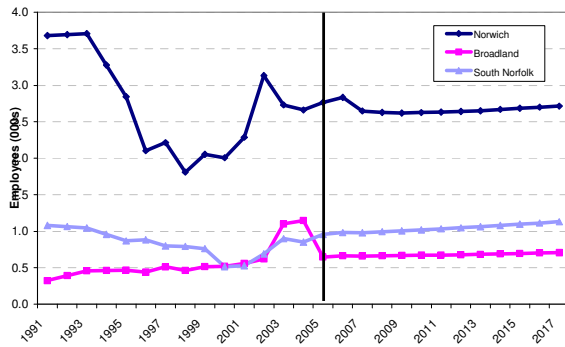
**Employees in air transport**



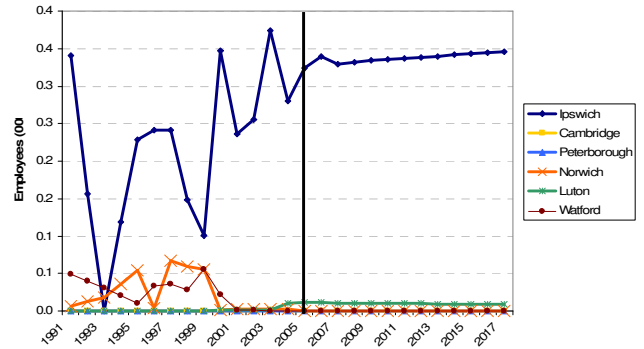
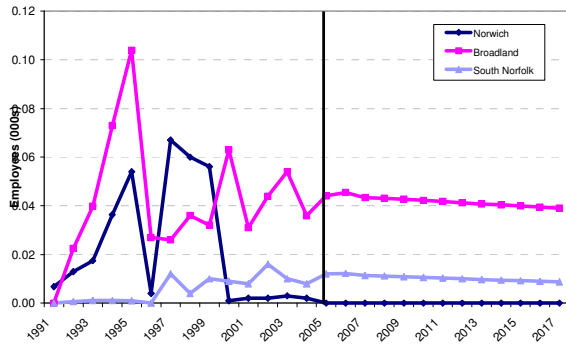
**Employees in communications**



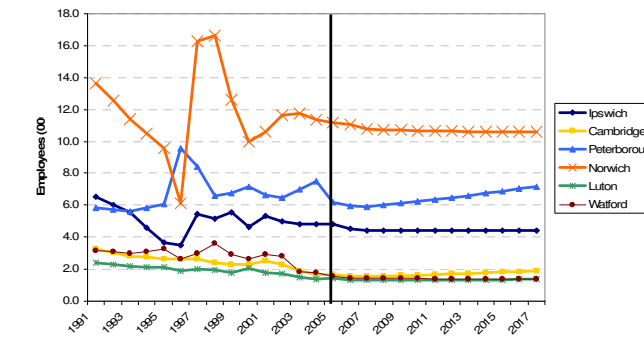
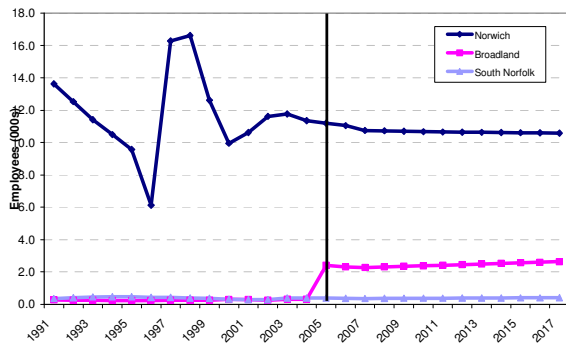
**Employees in land and other transport**



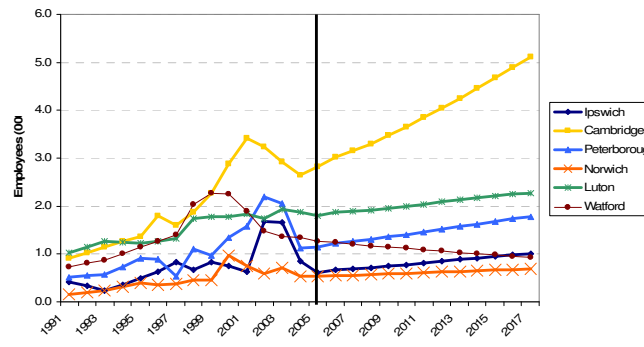
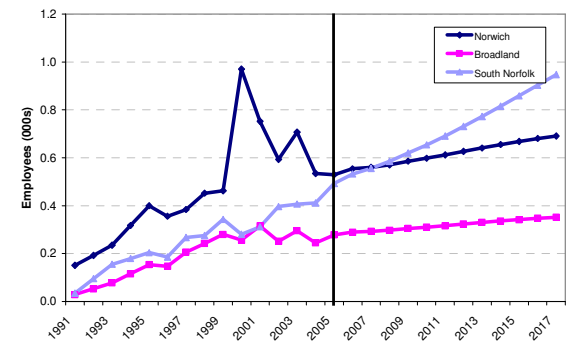
**Employees in water transport**



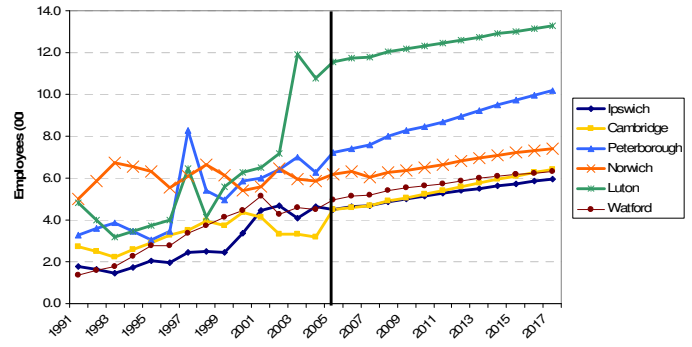
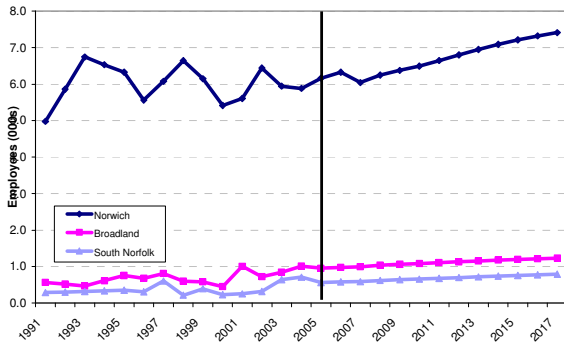
**Employees in finance**



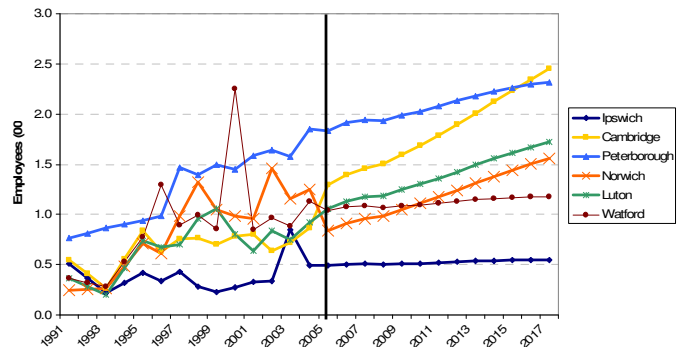
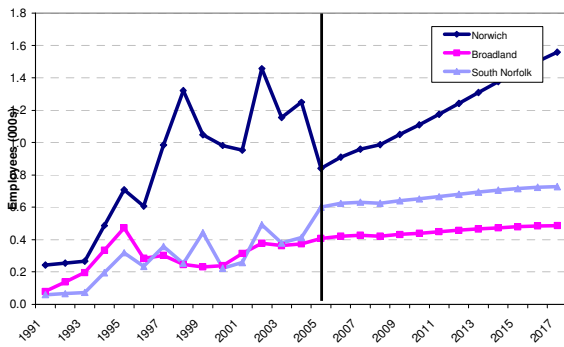
**Employees in business services – computer related**



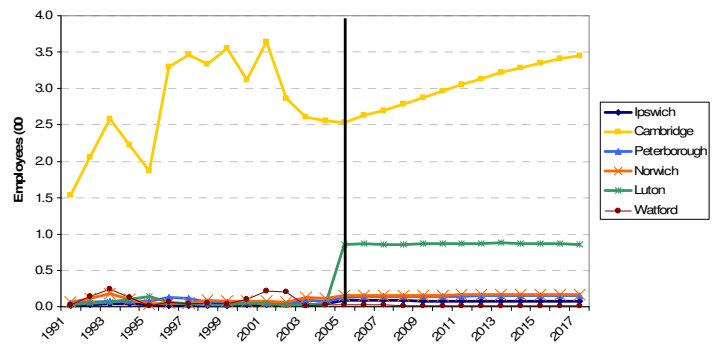
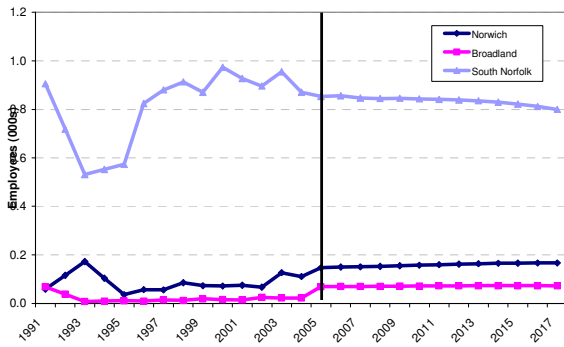
**Employees in business services – labour recruitment, security and cleaning**



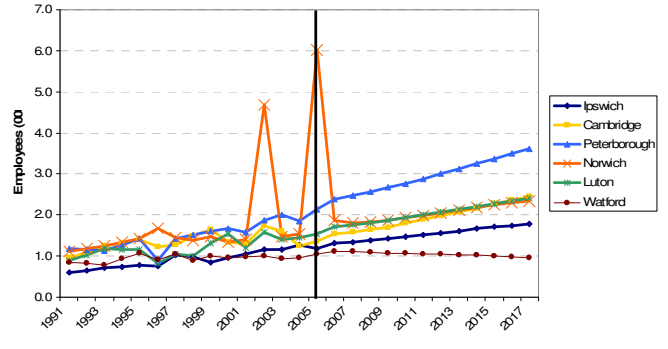
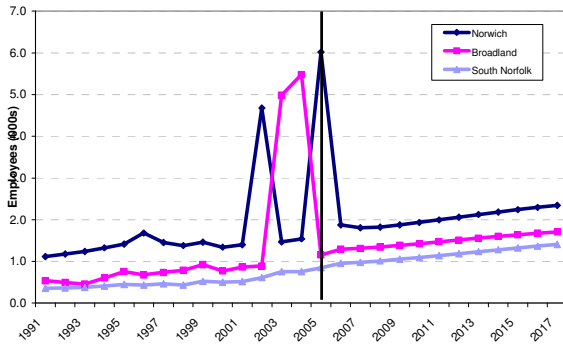
**Employees in business services – other including call centres**



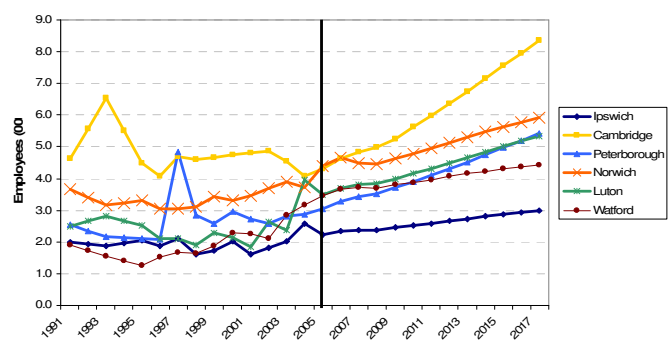
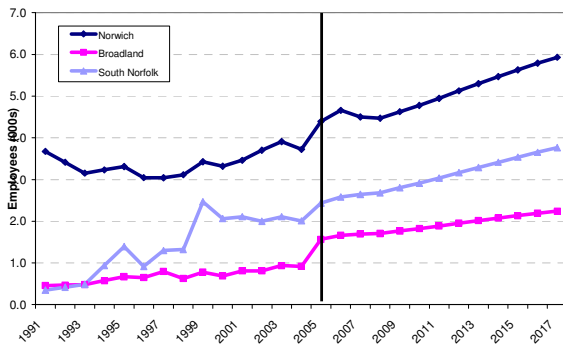
**Employees in business services – R&D and technical testing**



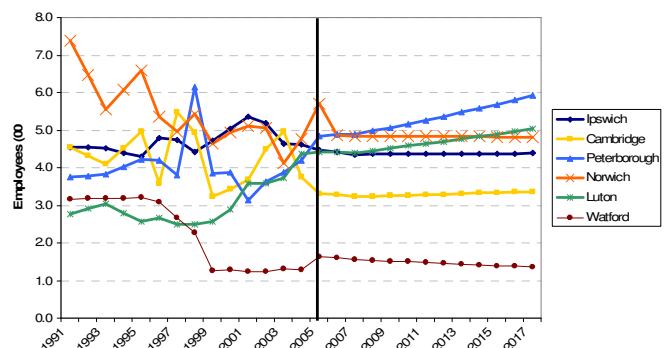
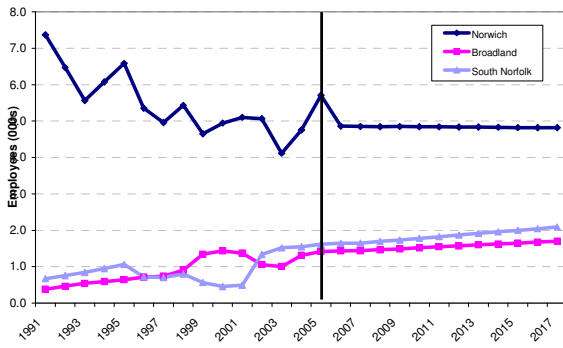
**Employees in business services – real estate and renting**



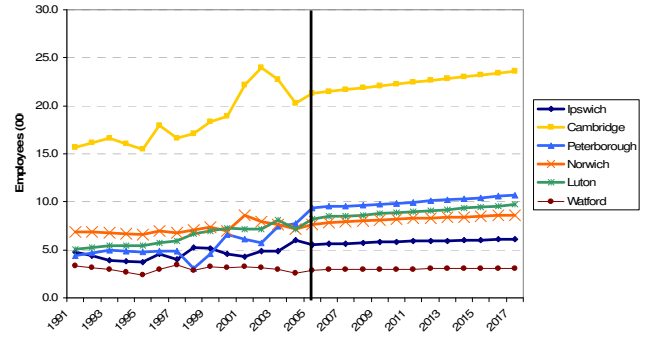
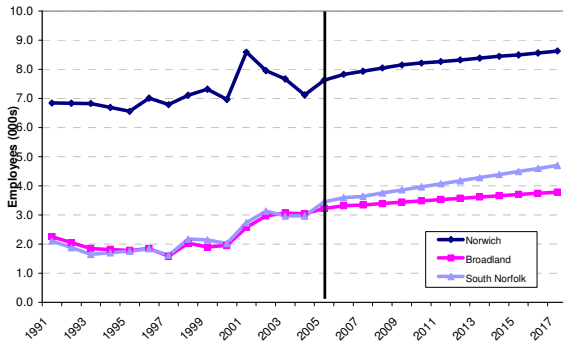
**Employees in business services – other tradable services**



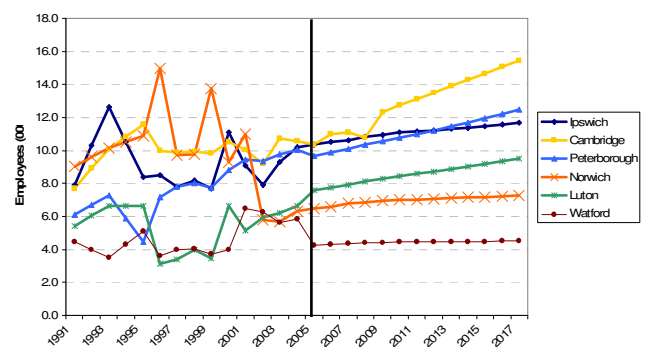
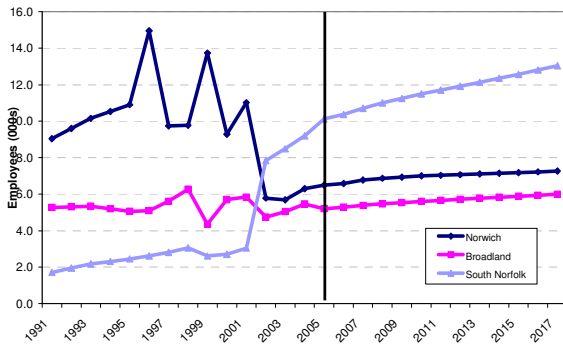
**Employees in public administration**



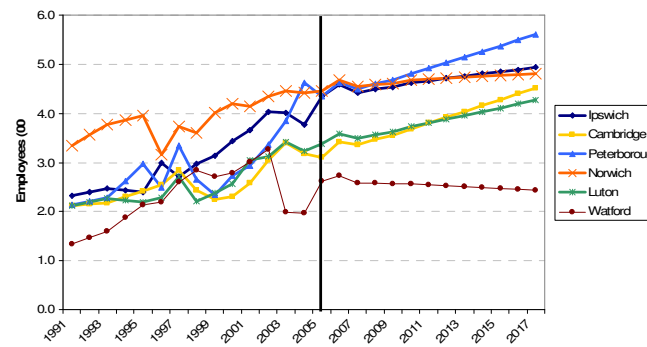
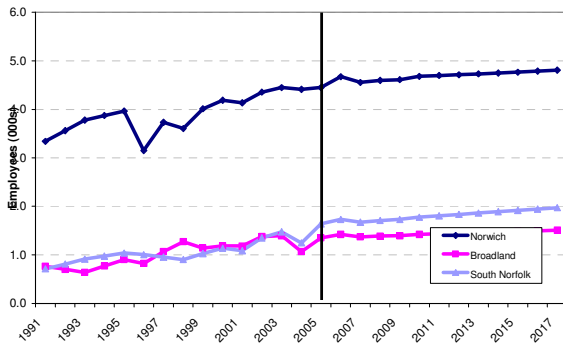
**Employees in education**



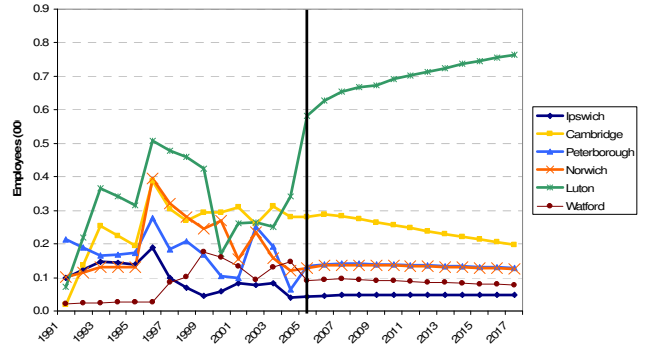
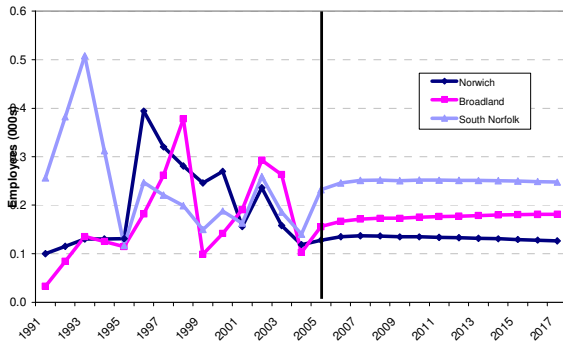
**Employees in health**



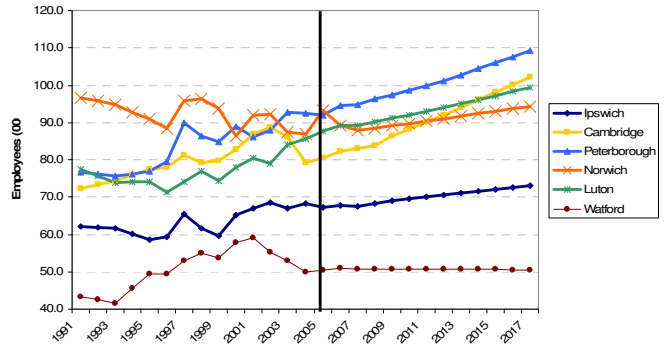
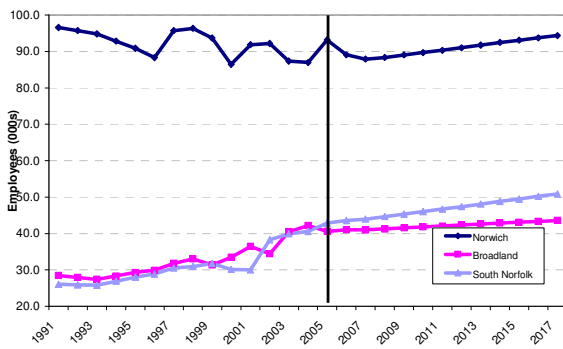
**Employees in other personal services – miscellaneous**



**Employees in other personal services – waste services**



**Total employees in employment**





### 3 Baseline forecast summary tables

Norwich Employees in Employment (000s)

	2001	2002	2003	2004	2005	2006	2007	2008	2010	2017	2021	2026
Agriculture	0.0	0.0	0.0	0.0	0.0	0.0	0.0	0.0	0.0	0.0	0.0	0.0
Extraction	0.1	0.1	0.1	0.1	0.1	0.1	0.1	0.1	0.1	0.1	0.0	0.0
Food, drink & tobacco	0.8	0.7	0.8	0.8	0.9	1.0	1.0	1.1	1.1	1.3	1.4	1.4
Other low tech	3.8	3.1	3.4	2.9	2.9	2.8	2.7	2.6	2.4	1.8	1.6	1.3
Metals & engineering	3.2	2.7	2.5	2.2	2.3	2.3	2.2	2.1	1.9	1.2	1.0	0.8
Chemicals & process industries	2.5	1.8	3.0	2.5	1.8	1.8	1.8	1.8	1.8	1.8	1.7	1.6
Other and recycling	0.3	0.3	0.3	0.2	0.2	0.2	0.2	0.3	0.3	0.3	0.3	0.3
Utilities	0.2	0.1	0.1	0.0	0.0	0.0	0.0	0.0	0.0	0.0	0.0	0.0
Construction	3.0	3.5	3.6	4.0	3.7	3.9	3.6	3.7	3.8	4.5	4.8	5.2
Wholesale & distribution of motor vehicles	5.8	5.7	5.4	5.6	5.2	5.3	5.1	5.1	5.1	5.4	5.6	5.7
Retailing	11.2	11.8	11.7	12.3	12.5	12.5	12.7	12.9	13.0	13.6	13.8	14.0
Hotels & catering	5.1	5.0	5.0	4.8	4.9	4.7	4.7	4.7	4.9	5.4	5.6	5.9
Air Transport	0.2	0.1	0.1	0.1	0.2	0.2	0.2	0.2	0.2	0.3	0.3	0.3
Communications	1.6	2.0	1.6	1.6	1.9	1.9	1.8	1.8	1.8	1.6	1.5	1.4
Land and other transport	2.3	3.1	2.7	2.7	2.8	2.8	2.6	2.6	2.6	2.7	2.7	2.7
Water transport	0.0	0.0	0.0	0.0	0.0	0.0	0.0	0.0	0.0	0.0	0.0	0.0
Finance	10.6	11.6	11.8	11.3	11.2	11.1	10.7	10.7	10.7	10.6	10.5	10.3
Bus. serv. - computer related	0.8	0.6	0.7	0.5	0.5	0.6	0.6	0.6	0.6	0.7	0.7	0.7
Bus. serv. - labour recruitment, security and cleaning	5.6	6.4	5.9	5.9	6.2	6.3	6.0	6.3	6.5	7.4	7.6	7.5
Bus. serv. - other including call centres	1.0	1.5	1.2	1.2	0.8	0.9	1.0	1.0	1.1	1.6	1.7	1.9
Bus. serv. - R&D, technical testing	0.1	0.1	0.1	0.1	0.1	0.1	0.2	0.2	0.2	0.2	0.2	0.1
Bus. serv. - real estate and renting	1.4	4.7	1.5	1.5	6.0	1.9	1.8	1.8	1.9	2.3	2.5	2.6
Bus. serv. - other tradable	3.5	3.7	3.9	3.7	4.4	4.7	4.5	4.5	4.8	5.9	6.3	6.6
Public admin	5.1	5.1	4.1	4.8	5.7	4.9	4.8	4.8	4.8	4.8	4.8	4.8
Education	8.6	8.0	7.7	7.1	7.6	7.8	7.9	8.0	8.2	8.6	8.9	9.1
Health	11.0	5.8	5.7	6.3	6.5	6.6	6.8	6.9	7.0	7.3	7.5	7.6
Other personal services - miscellaneous	4.1	4.4	4.4	4.4	4.5	4.7	4.6	4.6	4.7	4.8	4.9	5.0
Other personal services - waste services	0.2	0.2	0.2	0.1	0.1	0.1	0.1	0.1	0.1	0.1	0.1	0.1
Total	91.9	92.2	87.3	87.0	93.2	89.1	87.9	88.4	89.7	94.4	96.0	97.2

## Norwich GVA (£m, 2003 prices)

	2001	2002	2003	2004	2005	2006	2007	2008	2010	2017	2021	2026
Agriculture	0	1	1	1	1	1	1	1	1	2	2	2
Extraction	6	7	5	5	5	4	4	4	4	3	3	3
Food, drink & tobacco	34	39	38	47	52	54	58	62	70	97	112	130
Other low tech	122	128	117	121	116	115	114	113	111	102	98	92
Metals & engineering	82	82	82	89	91	90	89	88	86	78	73	68
Chemicals & process industries	81	139	128	99	109	109	114	120	130	163	184	209
Other and recycling	7	7	6	7	8	8	8	8	9	10	10	11
Utilities	15	11	7	7	5	4	4	3	2	1	0	0
Construction	138	147	174	162	164	156	162	168	184	248	291	354
Wholesale & distribution of motor vehicles	175	171	192	183	189	184	186	192	204	248	280	323
Retailing	190	191	214	231	235	242	248	255	268	322	357	404
Hotels & catering	66	67	69	74	75	78	80	84	91	121	136	156
Air Transport	6	6	7	10	10	11	12	13	16	27	33	43
Communications	89	72	75	96	94	99	103	107	114	133	139	148
Land and other transport	116	97	96	104	108	103	104	105	107	119	126	135
Water transport	0	0	0	0	0	0	0	0	0	0	0	0
Finance	471	519	577	611	648	676	693	714	748	873	948	1048
Business services - computer related	14	19	15	16	17	18	18	19	20	24	27	30
Business services - labour recruitment, security and	51	49	51	58	62	79	84	89	100	140	152	168
Business services - other including call centres	24	20	23	15	16	23	25	28	33	56	67	81
Business services - R&D, technical testing	1	2	2	3	3	3	3	3	3	4	4	5
Business services - real estate and renting	459	148	152	616	193	182	186	192	205	251	267	286
Business services - other tradable	86	87	86	103	108	88	92	98	112	164	182	207
Public admin	154	119	144	179	151	150	152	154	160	187	208	236
Education	168	156	149	157	156	155	156	160	168	204	225	253
Health	113	110	124	128	129	134	138	143	154	203	240	294
Other personal services - miscellaneous	120	122	124	129	135	132	134	137	143	171	191	219
Other personal services - waste services	6	4	3	4	4	4	4	4	4	4	4	5
Adjustment for financial services	143	171	166	183	245	220	226	236	263	375	440	530
Ownership of dwelling	160	161	165	171	176	179	184	191	205	266	313	384
Total	2812	2511	2661	3240	2816	2863	2931	3017	3191	3847	4235	4763

## Norwich summary indicators

	2001	2002	2003	2004	2005	2006	2007	2008	2010	2017	2021	2026
<b>Demography</b>												
Population (000s)	122.4	122.8	123.8	125.0	127.1	129.5	130.4	131.7	133.4	139.3	143.0	146.7
Working age population (000s)	79.6	81.0	82.2	83.9	86.0	88.3	88.7	89.3	89.7	92.3	93.3	94.9
Total net migration (000s)	0.6	0.5	0.8	0.9	1.8	2.0	0.4	0.7	0.1	0.4	0.3	0.5
<b>Labour market</b>												
Total employees in employment (000s)	91.9	92.2	87.3	87.0	93.2	89.1	87.9	88.4	89.7	94.4	96.0	97.2
Self employed (000s)	8.1	8.6	8.6	9.0	8.8	8.9	9.0	9.0	9.2	9.8	9.9	10.2
Total employment - jobs (000s)	100.0	100.8	96.0	96.0	102.0	98.1	96.9	97.4	99.0	104.2	106.0	107.4
Total employment - people (000s)	92.6	92.6	89.0	89.4	94.2	90.5	89.3	89.8	91.1	95.8	97.2	98.4
Residence based employment (000s)	53.6	52.9	54.6	56.1	59.4	61.2	60.9	61.2	62.0	64.8	65.8	66.8
Residence based employment rate (%)	59.7	58.3	59.2	60.0	62.0	62.5	61.6	61.2	61.1	60.9	60.1	59.5
Net commuting (000s)	39.0	39.7	34.4	33.3	34.9	29.3	28.5	28.6	29.1	30.9	31.4	31.6
Claimant unemployment (000s)	2.7	2.5	2.5	2.5	2.7	2.9	2.7	3.0	3.5	3.3	3.4	3.5
Claimant unemployment rate (%)	3.4	3.0	3.1	2.9	3.1	3.3	3.0	3.4	3.9	3.5	3.7	3.7
<b>Output</b>												
Total GVA (£m, 2003 prices)	2622	2812	2511	2661	3240	2816	2863	2931	3107	3751	4139	4647
Relative productivity (East=100)	86.3	91.6	84.5	86.2	97.1	86.9	87.6	87.9	88.0	87.7	87.5	87.2
<b>Housing</b>												
Households (000s)	54.7	55.1	55.6	55.9	56.7	57.5	58.4	59.4	61.1	67.0	70.4	73.9
Demand for dwellings (000s)	57.1	57.5	58.1	58.3	59.1	60.0	60.9	62.0	63.7	69.9	73.4	77.0
House prices (£)	73300	85400	110600	127400	142100	151100	162300	172100	180500	299900	358400	425500

## Broadland summary tables

## Broadland Employees in Employment (000s)

	2001	2002	2003	2004	2005	2006	2007	2008	2010	2017	2021	2026
Agriculture	1.2	1.2	1.1	1.1	1.0	0.9	0.9	0.9	0.8	0.6	0.5	0.5
Extraction	0.0	0.0	0.0	0.0	0.0	0.0	0.0	0.0	0.0	0.0	0.0	0.0
Food, drink & tobacco	2.5	2.7	2.8	2.7	2.5	2.6	2.5	2.5	2.4	2.1	1.9	1.7
Other low tech	0.7	0.7	0.8	0.6	0.8	0.8	0.8	0.8	0.8	0.7	0.7	0.6
Metals & engineering	2.6	2.4	1.9	2.1	2.1	2.1	2.1	2.1	1.9	1.6	1.5	1.3
Chemicals & process industries	0.9	1.0	1.2	1.4	1.1	1.1	1.1	1.1	1.0	0.9	0.8	0.8
Other and recycling	0.3	0.3	0.3	0.3	0.4	0.4	0.4	0.4	0.4	0.4	0.4	0.4
Utilities	0.0	0.0	0.0	0.0	0.0	0.0	0.0	0.0	0.0	0.0	0.0	0.0
Construction	2.8	1.9	2.5	3.1	2.9	2.9	2.9	2.9	3.0	3.3	3.4	3.6
Wholesale & distribution of motor vehicles	3.0	3.1	2.9	2.8	3.2	3.2	3.3	3.3	3.2	3.2	3.1	3.0
Retailing	4.0	4.1	4.1	4.3	4.3	4.3	4.4	4.4	4.4	4.5	4.6	4.6
Hotels & catering	2.1	1.6	2.3	2.3	2.3	2.2	2.2	2.2	2.3	2.6	2.7	2.9
Air Transport	0.0	0.0	0.0	0.0	0.0	0.0	0.0	0.0	0.0	0.0	0.0	0.0
Communications	0.9	1.0	0.9	0.9	1.1	1.1	1.1	1.1	1.1	1.0	0.9	0.9
Land and other transport	0.6	0.6	1.1	1.1	0.6	0.7	0.7	0.7	0.7	0.7	0.7	0.7
Water transport	0.0	0.0	0.1	0.0	0.0	0.0	0.0	0.0	0.0	0.0	0.0	0.0
Finance	0.3	0.3	0.3	0.3	2.4	2.3	2.3	2.3	2.4	2.6	2.7	2.9
Business services - computer related	0.3	0.3	0.3	0.2	0.3	0.3	0.3	0.3	0.3	0.4	0.4	0.4
Business services - labour recruitment, security and	1.0	0.7	0.8	1.0	1.0	1.0	1.0	1.0	1.1	1.2	1.2	1.2
Business services - other including call centres	0.3	0.4	0.4	0.4	0.4	0.4	0.4	0.4	0.4	0.5	0.5	0.5
Business services - R&D, technical testing	0.0	0.0	0.0	0.0	0.1	0.1	0.1	0.1	0.1	0.1	0.1	0.1
Business services - real estate and renting	0.9	0.9	5.0	5.5	1.2	1.3	1.3	1.3	1.4	1.7	1.8	1.9
Business services - other tradable	0.8	0.8	0.9	0.9	1.6	1.7	1.7	1.7	1.8	2.2	2.4	2.5
Public admin	1.4	1.1	1.0	1.3	1.4	1.4	1.4	1.5	1.5	1.7	1.8	1.9
Education	2.6	3.0	3.1	3.0	3.2	3.3	3.3	3.4	3.5	3.8	3.9	4.1
Health	5.8	4.7	5.0	5.5	5.2	5.3	5.4	5.5	5.6	6.0	6.2	6.5
Other personal services - miscellaneous	1.2	1.4	1.4	1.1	1.4	1.4	1.4	1.4	1.4	1.5	1.6	1.6
Other personal services - waste services	0.2	0.3	0.3	0.1	0.2	0.2	0.2	0.2	0.2	0.2	0.2	0.2
Total	36.4	34.4	40.5	42.2	40.6	41.0	41.0	41.3	41.8	43.5	44.0	44.6

**Broadland GVA (£m, 2003 prices)**

	2001	2002	2003	2004	2005	2006	2007	2008	2010	2017	2021	2026
Agriculture	52	51	49	48	48	50	49	49	49	49	49	48
Extraction	0	0	0	0	0	0	0	0	0	0	0	0
Food, drink & tobacco	125	134	130	128	136	142	144	146	149	154	156	158
Other low tech	27	32	27	33	34	37	38	39	41	46	49	51
Metals & engineering	73	65	80	80	88	94	96	99	103	115	123	132
Chemicals & process industries	44	59	69	59	66	70	72	74	79	92	98	108
Other and recycling	8	8	8	12	13	14	14	14	15	17	18	19
Utilities	0	0	0	0	0	0	0	0	0	0	0	0
Construction	94	133	174	158	163	176	183	189	203	256	290	340
Wholesale & distribution of motor vehicles	97	99	99	115	121	131	133	136	141	158	170	187
Retailing	67	71	78	81	85	92	94	96	101	118	129	145
Hotels & catering	21	32	33	34	36	40	41	43	47	64	72	83
Air Transport	0	0	0	1	1	2	2	2	2	1	1	0
Communications	47	47	47	60	61	68	70	73	78	91	95	102
Land and other transport	24	43	44	25	27	30	30	31	32	36	38	42
Water transport	5	8	7	11	15	15	15	15	15	15	15	15
Finance	10	14	17	131	138	156	164	171	185	240	273	320
Business services - computer related	6	9	8	9	10	11	11	11	12	14	16	18
Business services - labour recruitment, security and	6	8	10	10	11	15	16	17	19	27	29	33
Business services - other including call centres	7	7	7	8	8	12	12	13	15	20	21	22
Business services - R&D, technical testing	0	0	0	1	1	2	2	2	2	2	2	2
Business services - real estate and renting	92	556	579	125	145	154	159	164	175	212	224	240
Business services - other tradable	20	23	23	39	42	39	41	44	50	72	80	90
Public admin	31	29	39	43	44	47	49	50	54	71	84	103
Education	62	65	64	66	68	71	72	74	79	98	110	126
Health	95	104	111	104	109	119	123	127	138	187	223	279
Other personal services - miscellaneous	44	47	36	46	50	52	53	54	57	70	79	93
Other personal services - waste services	8	8	3	5	6	6	6	6	7	8	9	10
Adjustment for financial services	57	63	107	118	106	114	125	132	146	208	244	295
Ownership of dwelling	147	155	154	156	163	176	181	187	202	263	310	381
<b>Total</b>	<b>1157</b>	<b>1743</b>	<b>1789</b>	<b>1472</b>	<b>1585</b>	<b>1708</b>	<b>1746</b>	<b>1796</b>	<b>1902</b>	<b>2287</b>	<b>2518</b>	<b>2853</b>

## Broadland summary indicators

	2001	2002	2003	2004	2005	2006	2007	2008	2010	2017	2021	2026
<b>Demography</b>												
Population (000s)	118.8	119.3	120.3	120.9	121.5	122.2	123.0	123.9	125.9	132.2	135.7	140.0
Working age population (000s)	72.2	72.4	72.9	73.0	73.4	73.6	74.5	75.4	77.3	84.3	87.7	92.8
Total net migration (000s)	1.2	0.9	1.2	0.8	0.9	0.9	1.0	1.0	1.2	0.9	1.0	0.9
<b>Labour market</b>												
Total employees in employment (000s)	36.4	34.4	40.5	42.2	40.6	41.0	41.0	41.3	41.8	43.5	44.0	44.6
Self employed (000s)	7.9	7.1	9.3	10.1	8.6	9.3	9.5	9.6	9.8	10.2	10.2	10.5
Total employment - jobs (000s)	44.3	41.5	49.8	52.2	49.1	50.3	50.5	50.9	51.5	53.8	54.3	55.1
Total employment - people (000s)	39.2	36.7	43.7	46.0	43.6	44.6	44.8	45.1	45.6	47.5	47.9	48.5
Residence based employment (000s)	58.0	57.2	56.6	57.6	59.9	61.5	61.4	61.8	62.6	65.6	66.5	67.6
Residence based employment rate (%)	67.2	65.9	64.8	65.6	67.9	69.3	68.7	68.6	68.4	68.6	68.0	67.6
Net commuting (000s)	-18.8	-20.5	-13.0	-11.7	-16.4	-16.9	-16.7	-16.7	-17.0	-18.1	-18.6	-19.1
Claimant unemployment (000s)	0.8	0.8	0.8	0.7	0.8	0.9	0.8	0.8	1.0	1.1	1.1	1.6
Claimant unemployment rate (%)	1.2	1.0	1.0	1.0	1.1	1.2	1.1	1.1	1.3	1.3	1.3	1.7
<b>Output</b>												
Total GVA (£m, 2003 prices)	1145	1157	1743	1789	1472	1585	1708	1746	1850	2231	2458	2781
Relative productivity (East=100)	85.2	91.5	113.1	106.6	91.5	95.3	100.3	100.3	100.6	101.2	101.5	101.7
<b>Housing</b>												
Households (000s)	50.0	50.6	51.1	51.4	51.6	51.9	52.5	53.2	54.6	59.6	62.5	65.8
Demand for dwellings (000s)	51.4	52.1	52.5	52.8	53.0	53.3	54.0	54.6	56.1	61.2	64.1	67.6
House prices (£)	89900	107100	131100	154600	170000	179100	192700	216800	226400	377700	452590	544797

## South Norfolk summary tables

## South Norfolk Employees in Employment (000s)

	2001	2002	2003	2004	2005	2006	2007	2008	2010	2017	2021	2026
Agriculture	1.8	1.7	1.6	1.5	1.5	1.3	1.3	1.3	1.2	0.8	0.7	0.6
Extraction	0.1	0.1	0.1	0.1	0.1	0.1	0.1	0.1	0.1	0.0	0.0	0.0
Food, drink & tobacco	0.9	0.8	0.7	0.5	0.6	0.6	0.6	0.6	0.5	0.4	0.4	0.4
Other low tech	0.5	0.7	0.7	0.5	0.7	0.7	0.7	0.6	0.6	0.5	0.4	0.4
Metals & engineering	2.2	2.7	2.6	2.7	2.4	2.4	2.4	2.3	2.2	1.6	1.4	1.2
Chemicals & process industries	0.4	0.5	0.4	0.9	0.8	0.8	0.8	0.7	0.7	0.6	0.6	0.5
Other and recycling	0.2	0.3	0.3	0.3	0.4	0.4	0.4	0.4	0.4	0.3	0.3	0.3
Utilities	0.3	0.2	0.2	0.1	0.1	0.1	0.1	0.1	0.1	0.1	0.0	0.0
Construction	3.5	2.9	3.4	2.9	2.8	2.9	2.8	2.9	3.0	3.4	3.5	3.7
Wholesale & distribution of motor vehicles	2.0	2.9	2.6	3.0	2.9	2.9	3.0	3.0	3.1	3.3	3.4	3.6
Retailing	3.2	3.7	3.6	3.9	3.8	3.8	3.9	4.0	4.1	4.5	4.7	5.0
Hotels & catering	2.1	2.0	2.2	2.2	2.2	2.1	2.1	2.1	2.3	2.7	3.0	3.3
Air Transport	0.0	0.0	0.0	0.0	0.0	0.0	0.0	0.0	0.0	0.0	0.0	0.0
Communications	0.1	0.2	0.3	0.4	0.5	0.5	0.5	0.5	0.5	0.5	0.5	0.4
Land and other transport	0.5	0.7	0.9	0.9	1.0	1.0	1.0	1.0	1.0	1.1	1.2	1.3
Water transport	0.0	0.0	0.0	0.0	0.0	0.0	0.0	0.0	0.0	0.0	0.0	0.0
Finance	0.3	0.3	0.4	0.4	0.4	0.4	0.4	0.4	0.4	0.4	0.4	0.4
Business services - computer related	0.3	0.4	0.4	0.4	0.5	0.5	0.6	0.6	0.7	0.9	1.1	1.2
Business services - labour recruitment, security and	0.3	0.3	0.6	0.7	0.6	0.6	0.6	0.6	0.7	0.8	0.8	0.9
Business services - other including call centres	0.3	0.5	0.4	0.4	0.6	0.6	0.6	0.6	0.7	0.7	0.7	0.7
Business services - R&D, technical testing	0.9	0.9	1.0	0.9	0.9	0.9	0.8	0.8	0.8	0.8	0.7	0.6
Business services - real estate and renting	0.5	0.6	0.8	0.8	0.9	1.0	1.0	1.0	1.1	1.4	1.5	1.7
Business services - other tradable	2.1	2.0	2.1	2.0	2.4	2.6	2.6	2.7	2.9	3.8	4.1	4.5
Public admin	0.5	1.3	1.5	1.5	1.6	1.6	1.6	1.7	1.8	2.1	2.3	2.5
Education	2.7	3.1	3.0	3.0	3.4	3.6	3.6	3.8	4.0	4.7	5.1	5.7
Health	3.0	7.9	8.5	9.2	10.1	10.4	10.7	11.0	11.5	13.0	14.0	15.3
Other personal services - miscellaneous	1.1	1.4	1.5	1.2	1.6	1.7	1.7	1.7	1.8	2.0	2.1	2.2
Other personal services - waste services	0.2	0.3	0.2	0.1	0.2	0.2	0.3	0.3	0.3	0.2	0.2	0.2
Total	30.0	38.3	39.9	40.5	42.9	43.5	43.9	44.6	46.0	50.9	53.4	56.7

**South Norfolk GVA (£m, 2003 prices)**

	2001	2002	2003	2004	2005	2006	2007	2008	2010	2017	2021	2026
Agriculture	82	81	79	83	81	78	76	75	74	69	66	63
Extraction	5	5	4	4	4	4	4	4	4	3	3	3
Food, drink & tobacco	39	36	29	34	35	34	34	35	35	35	34	34
Other low tech	30	31	26	35	34	34	34	34	34	34	33	33
Metals & engineering	89	98	115	109	114	113	115	116	118	121	123	126
Chemicals & process industries	23	22	50	49	53	52	53	55	57	65	68	73
Other and recycling	8	9	10	13	14	14	14	14	15	15	16	17
Utilities	22	17	20	14	13	12	12	12	13	14	15	17
Construction	156	208	194	186	183	187	195	202	218	283	326	390
Wholesale & distribution of motor vehicles	97	97	124	119	121	124	128	132	141	174	198	234
Retailing	65	67	81	83	84	86	89	92	99	125	143	168
Hotels & catering	28	34	36	38	39	40	42	44	49	71	83	100
Air Transport	0	0	0	0	0	0	0	0	0	0	0	0
Communications	10	16	21	31	31	32	34	35	38	47	51	57
Land and other transport	29	38	38	44	46	46	48	49	51	61	67	77
Water transport	2	2	2	4	4	4	4	4	4	3	3	3
Finance	12	19	23	25	25	26	27	28	31	39	44	52
Business services - computer related	11	13	15	19	21	22	23	24	27	42	53	68
Business services - labour recruitment, security and	3	6	8	7	7	10	10	11	13	19	21	24
Business services - other including call centres	9	8	9	13	14	19	19	21	23	31	33	35
Business services - R&D, technical testing	17	22	20	20	20	21	21	22	22	24	25	25
Business services - real estate and renting	68	92	92	108	120	121	127	132	143	186	206	232
Business services - other tradable	53	57	58	71	74	64	68	73	85	129	147	174
Public admin	42	47	52	57	56	56	58	61	67	92	111	140
Education	70	68	72	81	82	81	84	87	95	129	151	184
Health	169	190	214	236	239	249	259	271	300	431	533	692
Other personal services - miscellaneous	48	55	50	67	70	69	70	72	78	99	115	139
Other personal services - waste services	8	6	5	9	10	10	10	10	10	12	12	13
Adjustment for financial services	53	71	87	98	115	120	123	130	146	220	267	338
Ownership of dwelling	147	157	165	171	171	175	180	188	204	272	326	407
<b>Total</b>	<b>1292</b>	<b>1429</b>	<b>1524</b>	<b>1633</b>	<b>1650</b>	<b>1663</b>	<b>1716</b>	<b>1774</b>	<b>1902</b>	<b>2405</b>	<b>2740</b>	<b>3241</b>



## South Norfolk summary indicators

	2001	2002	2003	2004	2005	2006	2007	2008	2010	2017	2021	2026
<b>Demography</b>												
Population (000s)	110.8	112.4	113.7	114.7	115.7	116.2	117.6	119.1	122.0	131.5	136.8	143.6
Working age population (000s)	66.9	67.8	68.3	68.5	68.9	68.9	70.2	71.4	73.9	82.7	87.2	93.8
Total net migration (000s)	0.9	1.7	1.5	1.2	1.1	0.6	1.4	1.5	1.4	1.3	1.3	1.3
<b>Labour market</b>												
Total employees in employment (000s)	30.0	38.3	39.9	40.5	42.9	43.5	43.9	44.6	46.0	50.9	53.4	56.7
Self employed (000s)	8.6	9.6	11.1	10.8	10.6	11.5	11.7	11.9	12.2	13.3	13.7	14.5
Total employment - jobs (000s)	38.6	47.9	51.0	51.4	53.4	55.1	55.7	56.5	58.2	64.2	67.2	71.1
Total employment - people (000s)	39.9	46.2	49.3	49.8	51.5	53.1	53.6	54.4	56.0	61.5	64.3	67.9
Residence based employment (000s)	52.6	51.8	53.3	55.0	58.6	60.2	60.5	61.1	62.5	67.3	69.5	72.4
Residence based employment rate (%)	65.9	64.1	65.1	66.6	70.3	71.9	71.4	71.2	71.1	71.5	71.1	71.2
Net commuting (000s)	-12.7	-5.6	-4.0	-5.2	-7.1	-7.1	-6.8	-6.7	-6.5	-5.8	-5.2	-4.5
Claimant unemployment (000s)	0.8	0.8	0.8	0.7	0.8	0.9	0.8	1.0	1.2	1.3	1.4	1.8
Claimant unemployment rate (%)	1.2	1.1	1.1	1.0	1.2	1.3	1.2	1.3	1.6	1.6	1.6	1.9
<b>Output</b>												
Total GVA (£m, 2003 prices)	1090	1292	1429	1524	1633	1650	1663	1716	1838	2327	2651	3131
Relative productivity (East=100)	93.0	88.6	90.6	92.3	93.5	90.6	88.6	88.7	88.5	88.4	88.5	88.7
<b>Housing</b>												
Households (000s)	46.8	47.2	47.7	48.1	48.4	48.8	49.5	50.3	52.0	57.9	61.4	65.6
Demand for dwellings (000s)	48.6	49.0	49.5	49.9	50.2	50.6	51.4	52.2	53.9	60.0	63.7	68.1
House prices (£)	97300	114700	143400	164300	184700	196300	205900	216300	228600	398300	490333	610958

## East of England summary tables

## East Employees in Employment (000s)

	2001	2002	2003	2004	2005	2006	2007	2008	2010	2017	2021	2026
Agriculture	34.5	33.8	31.8	32.4	32.1	28.4	28.7	27.9	26.2	21.1	18.7	16.0
Extraction	3.2	3.4	2.6	2.2	2.0	2.0	2.0	1.8	1.6	1.1	0.9	0.7
Food, drink & tobacco	42.9	41.1	42.0	39.4	38.3	38.7	37.9	37.0	35.5	31.5	29.6	27.3
Other low tech	60.9	56.5	58.7	51.1	50.7	50.2	48.6	46.9	44.1	35.9	32.3	28.5
Metals & engineering	149.8	139.4	124.5	119.6	121.0	120.9	119.1	116.0	107.3	82.4	71.5	60.0
Chemicals & process industries	53.0	53.5	50.7	49.9	44.2	43.3	42.2	41.2	39.4	34.1	31.7	28.9
Other and recycling	20.6	18.3	19.4	17.3	16.3	16.1	16.1	16.0	15.6	14.2	13.5	12.7
Utilities	10.8	9.1	9.3	7.4	6.8	6.9	6.9	6.7	6.4	5.2	4.4	3.6
Construction	112.1	121.3	116.1	118.2	122.0	125.1	121.5	125.0	129.1	144.6	151.3	158.9
Wholesale & distribution of motor vehicles	166.1	169.9	165.6	165.8	169.1	170.7	172.4	171.9	172.8	174.6	175.7	177.0
Retailing	278.2	289.1	296.6	292.2	290.6	289.9	294.7	297.8	301.4	318.4	325.5	332.0
Hotels & catering	136.5	138.1	141.1	144.2	133.5	128.6	127.9	129.0	134.7	154.0	165.2	178.2
Air Transport	9.1	8.4	8.6	7.9	8.4	8.5	8.6	8.7	9.0	10.0	10.5	11.3
Communications	55.2	50.1	45.8	46.6	48.9	48.8	47.3	47.6	47.8	48.8	49.6	50.4
Land and other transport	84.0	84.5	87.3	90.8	96.6	98.6	97.9	99.0	100.3	108.5	112.7	117.1
Water transport	1.8	1.8	1.7	1.8	1.7	1.8	1.7	1.7	1.7	1.7	1.8	1.8
Finance	81.8	77.7	79.9	77.0	73.8	71.8	69.9	70.7	71.6	75.9	77.6	79.2
Business services - computer related	47.8	50.0	49.0	46.3	45.2	46.8	47.4	48.3	50.8	60.2	62.9	64.0
Business services - labour recruitment, security and	120.6	112.0	115.6	112.1	120.9	124.8	126.2	132.6	139.4	164.8	172.2	176.3
Business services - other including call centres	27.8	32.3	34.6	36.9	38.6	40.5	41.5	41.7	44.9	57.6	62.8	67.4
Business services - R&D, technical testing	22.6	21.8	21.9	22.3	25.1	25.8	26.0	26.4	27.6	31.3	32.0	31.6
Business services - real estate and renting	46.1	50.7	53.3	57.3	59.5	61.9	63.0	64.6	68.9	85.4	91.4	96.8
Business services - other tradable	83.9	92.7	100.1	103.2	109.6	113.7	115.5	115.9	123.4	151.0	160.8	168.8
Public admin	91.1	95.5	101.8	103.5	101.5	100.4	99.6	100.1	101.2	105.2	107.7	110.8
Education	187.8	197.8	200.8	204.0	222.5	229.1	230.9	235.3	242.7	267.8	282.5	300.2
Health	230.0	219.9	230.3	245.2	259.5	264.7	270.5	275.8	285.9	314.6	332.3	355.2
Other personal services - miscellaneous	96.4	103.5	105.1	98.9	104.1	109.4	106.0	107.6	110.8	120.2	125.7	133.0
Other personal services - waste services	11.5	11.4	10.5	9.6	10.5	11.2	11.6	11.8	12.2	13.6	14.3	15.2
Total	2266.1	2283.6	2304.7	2303.0	2353.0	2378.4	2381.6	2405.2	2452.2	2634.0	2717.1	2802.8

**East GVA (£m, 2003 prices)**

	2001	2002	2003	2004	2005	2006	2007	2008	2010	2017	2021	2026
Agriculture	1215	1371	1310	1304	1368	1364	1344	1332	1331	1360	1399	1447
Extraction	125	161	145	114	101	97	90	85	81	69	63	57
Food, drink & tobacco	2087	2069	2088	2033	2043	2119	2090	2108	2158	2279	2357	2454
Other low tech	2628	2515	2640	2440	2402	2371	2375	2381	2380	2347	2338	2315
Metals & engineering	5359	4933	4894	5154	5373	5773	5827	5885	5996	6225	6371	6567
Chemicals & process industries	2598	2685	2728	2891	2684	2885	2875	2932	3069	3504	3735	4047
Other and recycling	602	563	584	555	563	588	588	589	596	604	611	619
Utilities	1273	991	1009	1163	1134	1069	993	1012	1065	1306	1493	1766
Construction	5704	6317	6457	6933	7073	7143	7321	7587	8128	10480	12064	14276
Wholesale & distribution of motor vehicles	6246	6450	6726	7209	7411	7624	7855	7977	8397	9769	10816	12206
Retailing	5161	5633	5949	6254	6443	6638	6870	7042	7450	8944	10015	11396
Hotels & catering	2243	2209	2341	2557	2402	2478	2599	2701	2971	4154	4746	5557
Air Transport	552	512	551	561	630	682	712	759	857	1282	1489	1795
Communications	3176	2854	2763	2912	3172	3243	3438	3603	3951	5153	5868	6810
Land and other transport	3809	3769	3852	4047	4402	4606	4727	4829	5013	5803	6356	7062
Water transport	210	208	284	370	441	597	593	603	619	669	710	764
Finance	3649	3693	4180	4622	4731	4978	5290	5498	5906	7358	8268	9449
Business services - computer related	1498	1667	1799	1871	1900	2040	2088	2147	2281	2808	3252	3762
Business services - labour recruitment, security and	1215	1110	1224	1242	1430	1560	2136	2297	2617	3893	4399	4981
Business services - other including call centres	615	686	776	894	869	949	1315	1384	1609	2562	2994	3517
Business services - R&D, technical testing	523	510	591	600	672	692	753	785	851	1104	1271	1466
Business services - real estate and renting	6010	6214	6844	7127	7579	8105	8202	8521	9150	11556	12649	13742
Business services - other tradable	2538	2811	2989	3173	3317	3462	3007	3167	3614	5344	5999	6750
Public admin	3247	3398	3501	3721	3685	3669	3666	3719	3892	4754	5423	6393
Education	5084	5140	5103	5242	5529	5582	5584	5668	5991	7624	8611	10025
Health	5435	5209	5459	5837	6115	6298	6580	6807	7438	10352	12577	16043
Other personal services - miscellaneous	3468	3787	3890	3782	3982	4254	4199	4268	4513	5625	6468	7701
Other personal services - waste services	381	385	360	356	398	432	455	463	490	630	730	872
Adjustment for financial services	4191	4298	4817	5422	5959	6712	7071	7398	8238	12007	14457	17642
Ownership of dwelling	8137	8194	8401	8539	8651	8915	9185	9440	10193	13374	15872	19658
<b>Total</b>	<b>80599</b>	<b>81746</b>	<b>84622</b>	<b>88081</b>	<b>90542</b>	<b>93503</b>	<b>95686</b>	<b>98189</b>	<b>104372</b>	<b>128926</b>	<b>144486</b>	<b>165856</b>

## East summary indicators

	2001	2002	2003	2004	2005	2006	2007	2008	2010	2017	2021	2026
<b>Demography</b>												
Population (000s)	5400.5	5432.7	5474.7	5510.9	5563.0	5606.5	5654.8	5706.9	5813.4	6177.7	6386.0	6634.6
Working age population (000s)	3360.3	3383.7	3413.3	3435.4	3472.8	3503.4	3534.8	3563.1	3620.2	3860.2	3972.9	4144.2
Total net migration (000s)	17.6	26.2	36.9	24.5	41.6	30.1	31.8	35.5	34.4	32.3	32.9	33.0
<b>Labour market</b>												
Total employees in employment (000s)	2266.1	2283.6	2304.7	2303.0	2353.0	2378.4	2381.6	2405.2	2452.2	2634.0	2717.1	2802.8
Self employed (000s)	370.0	382.9	409.8	419.7	396.3	431.9	439.9	444.3	453.8	489.3	499.8	519.2
Total employment - jobs (000s)	2653.9	2683.5	2732.3	2741.3	2767.8	2828.0	2838.8	2868.2	2924.9	3143.2	3237.3	3343.0
Total employment - people (000s)	2383.1	2416.8	2464.2	2476.5	2493.7	2548.9	2557.8	2582.1	2630.7	2819.7	2899.9	2989.8
Residence based employment (000s)	2579.1	2582.0	2607.1	2633.8	2681.8	2723.9	2738.9	2763.6	2817.7	3010.6	3093.8	3193.1
Residence based employment rate (%)	66.4	66.0	66.0	66.2	66.7	67.1	66.8	66.7	66.5	66.8	66.3	66.1
Net commuting (000s)	-196.0	-165.2	-142.9	-157.4	-188.1	-175.0	-181.0	-181.5	-187.0	-190.9	-193.9	-203.2
Claimant unemployment (000s)	55.0	56.5	58.1	55.4	58.1	65.5	61.6	65.1	74.7	74.5	78.2	91.9
Claimant unemployment rate (%)	1.6	1.7	1.7	1.6	1.7	1.9	1.7	1.8	2.1	1.9	2.0	2.2
<b>Output</b>												
Total GVA (£m, 2003 prices)	80599	81746	84622	88081	90542	93503	95686	98189	104372	128926	144486	165856
Relative productivity (East=100)	100.0	100.0	100.0	100.0	100.0	100.0	100.0	100.0	100.0	100.0	100.0	100.0
<b>Housing</b>												
Households (000s)	2236.4	2257.1	2273.9	2298.7	2321.5	2340.8	2372.8	2406.6	2476.3	2726.6	2870.1	3037.6
Demand for dwellings (000s)	2312.5	2334.0	2351.0	2376.2	2399.2	2418.4	2451.4	2486.3	2558.3	2816.8	2965.1	3138.2
House prices (£)	118700	129700	158200	181500	197200	204200	211300	227500	238700	410000	501066	614537

## 4 Summary of relative economic standings: Key Metrics

Table C1: Key metrics

	Norwich	Broadland	South Norfolk
Employment rate 2006	73.0	78.2	83.0
% employment growth 1995-2005	2.5	38.7	53.2
Unemployment rate 2007	3.0	1.1	1.2
% graduates 2006	30.0	22.5	33.3
% growth in financial and business services 1995-2005	34.5	123.6	64.4
Private services concentration 2005	65.8	49.4	42.9
Public services concentration 2005	21.3	24.3	35.4
Manufacturing and production concentration 2005	12.9	26.4	21.7
Average rates (£000s) 2006	29.3	20.6	14.0
VAT stock per 1,000 working age population 2005	39	50	64
VAT registrations per 1,000 working age population 2005	3	4	5
Resident based wages 2007	374.1	398.5	443.9
Workplace based wages 2007	382.3	398.5	404.8
Population density (000s/km <sup>2</sup> ) 2006	3.3	0.2	0.1
Employment density (000s/km <sup>2</sup> ) 2005	2.4	0.1	0.0

Note: Highest shaded in blue, top five shaded in pale blue. Lowest shaded in yellow, bottom 5 shaded in pale yellow

Table C2: Key metrics rankings (1 = highest, 48 = lowest)

	Norwich	Broadland	South Norfolk
Employment rate 2006	42	20	2
% employment growth 1995-2005	45	4	1
Unemployment rate 2007	5	37	34
% graduates 2006	12	27	7
% growth in financial and business services 1995-2005	25	1	9
Private services concentration 2005	5	39	48
Public services concentration 2005	29	22	2
Manufacturing and production concentration 2005	42	9	20
Average rates (£000s) 2006	19	27	41
VAT stock per 1,000 working age population 2005	43	31	14
VAT registrations per 1,000 working age population 2005	45	24	41
Resident based wages 2007	44	38	32
Workplace based wages 2007	37	34	32
Population density (000s/km <sup>2</sup> ) 2006	4	33	42
Employment density (000s/km <sup>2</sup> ) 2005	1	34	43

Note: Highest shaded in blue, top five shaded in pale blue. Lowest shaded in yellow, bottom 5 shaded in pale yellow

## 5 Lower Growth Scenario summary tables

### Lower growth scenario: Norwich Employees in Employment (000s)

	2001	2002	2003	2004	2005	2006	2007	2008	2010	2017	2021	2026
Agriculture	0.0	0.0	0.0	0.0	0.0	0.0	0.0	0.0	0.0	0.0	0.0	0.0
Extraction	0.1	0.1	0.1	0.1	0.1	0.1	0.1	0.1	0.1	0.1	0.0	0.0
Food, drink & tobacco	0.8	0.7	0.8	0.8	0.9	1.0	1.0	1.1	1.1	1.4	1.4	1.5
Other low tech	3.8	3.1	3.4	2.9	2.9	2.8	2.7	2.6	2.4	1.9	1.6	1.3
Metals & engineering	3.2	2.7	2.5	2.2	2.3	2.3	2.2	2.1	1.9	1.3	1.0	0.8
Chemicals & process industries	2.5	1.8	3.0	2.5	1.8	1.8	1.8	1.8	1.8	1.8	1.7	1.6
Other and recycling	0.3	0.3	0.3	0.2	0.2	0.2	0.3	0.3	0.3	0.3	0.3	0.3
Utilities	0.2	0.1	0.1	0.0	0.0	0.0	0.0	0.0	0.0	0.0	0.0	0.0
Construction	3.0	3.5	3.6	4.0	3.7	3.9	3.6	3.7	3.8	4.4	4.6	4.9
Wholesale & distribution of motor vehicles	5.8	5.7	5.4	5.6	5.2	5.3	5.1	5.1	5.1	5.2	5.2	5.3
Retailing	11.2	11.8	11.7	12.3	12.5	12.5	12.7	12.9	13.0	13.3	13.4	13.4
Hotels & catering	5.1	5.0	5.0	4.8	4.9	4.7	4.7	4.7	4.9	5.3	5.5	5.7
Air Transport	0.2	0.1	0.1	0.1	0.2	0.2	0.2	0.2	0.2	0.3	0.3	0.3
Communications	1.6	2.0	1.6	1.6	1.9	1.9	1.8	1.8	1.8	1.6	1.5	1.4
Land and other transport	2.3	3.1	2.7	2.7	2.8	2.8	2.6	2.6	2.6	2.6	2.6	2.5
Water transport	0.0	0.0	0.0	0.0	0.0	0.0	0.0	0.0	0.0	0.0	0.0	0.0
Finance	10.6	11.6	11.8	11.3	11.2	11.1	10.8	10.5	9.9	8.0	6.8	6.6
Bus. serv. - computer related	0.8	0.6	0.7	0.5	0.5	0.6	0.6	0.6	0.6	0.7	0.7	0.7
Bus. serv. - labour recruitment, security and cleaning	5.6	6.4	5.9	5.9	6.2	6.3	6.0	6.3	6.5	7.1	7.1	6.9
Bus. serv. - other including call centres	1.0	1.5	1.2	1.2	0.8	0.9	1.0	1.0	1.1	1.6	1.7	1.9
Bus. serv. - R&D, technical testing	0.1	0.1	0.1	0.1	0.1	0.1	0.2	0.2	0.2	0.2	0.2	0.1
Bus. serv. - real estate and renting	1.4	4.7	1.5	1.5	6.0	1.9	1.8	1.8	1.9	2.3	2.3	2.4
Bus. serv. - other tradable	3.5	3.7	3.9	3.7	4.4	4.7	4.5	4.5	4.8	5.7	6.0	6.2
Public admin	5.1	5.1	4.1	4.8	5.7	4.9	4.9	4.9	4.9	4.8	4.8	4.8
Education	8.6	8.0	7.7	7.1	7.6	7.8	7.9	8.1	8.2	8.5	8.7	8.8
Health	11.0	5.8	5.7	6.3	6.5	6.6	6.8	6.9	7.0	7.2	7.3	7.5
Other personal services - miscellaneous	4.1	4.4	4.4	4.4	4.5	4.7	4.6	4.6	4.7	4.8	4.8	4.8
Other personal services - waste services	0.2	0.2	0.2	0.1	0.1	0.1	0.1	0.1	0.1	0.1	0.1	0.1
Total	91.9	92.2	87.3	87.0	93.2	89.1	88.0	88.2	88.9	90.2	89.7	90.0

### Lower growth scenario: Norwich summary indicators

	2001	2002	2003	2004	2005	2006	2007	2008	2010	2017	2021	2026
<b>Demography</b>												
Population (000s)	122.4	122.8	123.8	125.0	127.1	129.5	130.4	131.7	133.1	137.1	139.4	141.8
Working age population (000s)	79.6	81.0	82.2	83.9	86.0	88.3	88.7	89.3	89.4	90.2	90.1	90.4
Total net migration (000s)	0.6	0.5	0.8	0.9	1.8	2.0	0.4	0.7	-0.1	0.1	0.0	0.3
<b>Labour market</b>												
Total employees in employment (000s)	91.9	92.2	87.3	87.0	93.2	89.1	88.0	88.2	88.9	90.2	89.7	90.0
Self employed (000s)	8.1	8.6	8.6	9.0	8.8	8.9	9.0	9.0	9.2	9.5	9.4	9.6
Total employment - jobs (000s)	100.0	100.8	96.0	96.0	102.0	98.1	97.0	97.3	98.1	99.7	99.1	99.6
Total employment - people (000s)	92.6	92.6	89.0	89.4	94.2	90.5	89.4	89.6	90.3	91.6	90.9	91.2
Residence based employment (000s)	53.6	52.9	54.6	56.1	59.4	61.2	60.8	60.9	61.2	61.7	61.2	61.2
Residence based employment rate (%)	59.7	58.3	59.2	60.0	62.0	62.5	61.5	61.0	60.4	58.8	57.2	56.3
Net commuting (000s)	39.0	39.7	34.4	33.3	34.9	29.3	28.6	28.7	29.1	29.9	29.7	30.0
Claimant unemployment (000s)	2.7	2.5	2.5	2.5	2.7	2.9	2.7	3.1	3.7	3.5	3.6	3.5
Claimant unemployment rate (%)	3.4	3.0	3.1	2.9	3.1	3.3	3.0	3.5	4.1	3.8	4.0	3.8
<b>Output</b>												
Total GVA (£m, 2003 prices)	2622	2812	2511	2661	3240	2817	2865	2917	3055	3499	3738	4174
Relative productivity (East=100)	86.3	91.6	84.5	86.2	97.1	86.9	87.7	87.6	87.3	85.5	84.5	84.4
<b>Housing</b>												
Households (000s)	54.7	55.1	55.6	55.9	56.7	57.5	58.4	59.4	61.0	65.9	68.6	71.5
Demand for dwellings (000s)	57.1	57.5	58.1	58.3	59.1	60.0	60.9	62.0	63.6	68.8	71.5	74.5
House prices (£)	73300	85400	110600	127400	142100	151100	162300	172200	178500	278900	322200	380100

## Broadland summary tables

### Lower growth scenario: Broadland Employees in Employment (000s)

	2001	2002	2003	2004	2005	2006	2007	2008	2010	2017	2021	2026
Agriculture	1.2	1.2	1.1	1.1	1.0	0.9	0.9	0.9	0.8	0.6	0.5	0.5
Extraction	0.0	0.0	0.0	0.0	0.0	0.0	0.0	0.0	0.0	0.0	0.0	0.0
Food, drink & tobacco	2.5	2.7	2.8	2.7	2.5	2.5	2.5	2.4	2.3	1.9	1.6	1.4
Other low tech	0.7	0.7	0.8	0.6	0.8	0.8	0.7	0.7	0.7	0.5	0.4	0.4
Metals & engineering	2.6	2.4	1.9	2.1	2.1	2.1	2.0	2.0	1.8	1.3	1.1	0.9
Chemicals & process industries	0.9	1.0	1.2	1.4	1.1	1.1	1.0	1.0	1.0	0.8	0.7	0.6
Other and recycling	0.3	0.3	0.3	0.3	0.4	0.4	0.4	0.4	0.3	0.3	0.3	0.2
Utilities	0.0	0.0	0.0	0.0	0.0	0.0	0.0	0.0	0.0	0.0	0.0	0.0
Construction	2.8	1.9	2.5	3.1	2.9	2.9	2.8	2.9	3.0	3.1	3.1	3.1
Wholesale & distribution of motor vehicles	3.0	3.1	2.9	2.8	3.2	3.2	3.3	3.2	3.2	2.9	2.7	2.6
Retailing	4.0	4.1	4.1	4.3	4.3	4.3	4.4	4.4	4.4	4.5	4.4	4.4
Hotels & catering	2.1	1.6	2.3	2.3	2.3	2.2	2.2	2.2	2.3	2.5	2.6	2.8
Air Transport	0.0	0.0	0.0	0.0	0.0	0.0	0.0	0.0	0.0	0.0	0.0	0.0
Communications	0.9	1.0	0.9	0.9	1.1	1.1	1.1	1.1	1.1	1.0	0.9	0.9
Land and other transport	0.6	0.6	1.1	1.1	0.6	0.7	0.7	0.7	0.7	0.6	0.6	0.6
Water transport	0.0	0.0	0.1	0.0	0.0	0.0	0.0	0.0	0.0	0.0	0.0	0.0
Finance	0.3	0.3	0.3	0.3	2.4	2.3	2.2	2.2	2.2	2.2	2.1	2.0
Business services - computer related	0.3	0.3	0.3	0.2	0.3	0.3	0.3	0.3	0.3	0.3	0.3	0.2
Business services - labour recruitment, security and	1.0	0.7	0.8	1.0	1.0	1.0	1.0	1.0	1.1	1.1	1.1	1.1
Business services - other including call centres	0.3	0.4	0.4	0.4	0.4	0.4	0.4	0.4	0.4	0.5	0.5	0.5
Business services - R&D, technical testing	0.0	0.0	0.0	0.0	0.1	0.1	0.1	0.1	0.1	0.1	0.1	0.1
Business services - real estate and renting	0.9	0.9	5.0	5.5	1.2	1.3	1.3	1.3	1.4	1.6	1.6	1.6
Business services - other tradable	0.8	0.8	0.9	0.9	1.6	1.6	1.6	1.6	1.7	1.8	1.8	1.7
Public admin	1.4	1.1	1.0	1.3	1.4	1.4	1.4	1.4	1.4	1.4	1.4	1.4
Education	2.6	3.0	3.1	3.0	3.2	3.3	3.3	3.4	3.5	3.7	3.9	4.0
Health	5.8	4.7	5.0	5.5	5.2	5.2	5.3	5.3	5.4	5.3	5.3	5.2
Other personal services - miscellaneous	1.2	1.4	1.4	1.1	1.4	1.4	1.4	1.4	1.4	1.5	1.5	1.6
Other personal services - waste services	0.2	0.3	0.3	0.1	0.2	0.2	0.2	0.2	0.2	0.2	0.2	0.2
Total	36.4	34.4	40.5	42.2	40.6	40.8	40.5	40.5	40.4	39.7	38.8	37.8



Lower growth scenario: Broadland GVA (£m, 2003 prices)

	2001	2002	2003	2004	2005	2006	2007	2008	2010	2017	2021	2026
Agriculture	52	51	49	48	48	50	49	49	49	49	49	48
Extraction	0	0	0	0	0	0	0	0	0	0	0	0
Food, drink & tobacco	125	134	130	128	135	140	141	141	142	138	134	129
Other low tech	27	32	27	33	33	35	35	35	34	33	31	30
Metals & engineering	73	65	80	80	86	91	92	93	94	94	94	95
Chemicals & process industries	44	59	69	59	65	68	69	71	73	79	81	84
Other and recycling	8	8	8	12	13	13	13	13	13	12	12	11
Utilities	0	0	0	0	0	0	0	0	0	0	0	0
Construction	94	133	174	158	163	176	181	186	196	234	257	291
Wholesale & distribution of motor vehicles	97	99	99	115	121	131	131	133	136	143	149	158
Retailing	67	71	78	81	85	92	94	96	100	116	126	139
Hotels & catering	21	32	33	34	36	40	41	43	47	63	70	80
Air Transport	0	0	0	1	1	2	2	2	2	1	1	0
Communications	47	47	47	60	61	68	70	73	78	91	95	102
Land and other transport	24	43	44	25	27	29	30	30	31	33	34	35
Water transport	5	8	7	11	15	15	15	15	15	15	15	15
Finance	10	14	17	131	136	151	156	160	167	193	204	217
Business services - computer related	6	9	8	9	10	10	10	11	11	11	11	12
Business services - labour recruitment, security and	6	8	10	10	11	15	16	17	19	25	26	28
Business services - other including call centres	7	7	7	8	8	12	12	13	15	20	21	22
Business services - R&D, technical testing	0	0	0	1	1	2	2	2	2	2	2	2
Business services - real estate and renting	92	556	579	125	145	153	157	161	169	193	197	203
Business services - other tradable	20	23	23	39	42	38	39	41	45	56	58	59
Public admin	31	29	39	43	44	46	47	47	50	58	65	75
Education	62	65	64	66	68	71	72	74	79	96	107	122
Health	95	104	111	104	108	117	120	123	131	164	186	219
Other personal services - miscellaneous	44	47	36	46	50	52	53	54	57	69	77	90
Other personal services - waste services	8	8	3	5	6	6	6	6	7	8	9	10
Adjustment for financial services	57	63	107	118	106	113	124	129	141	188	212	245
Ownership of dwelling	147	155	154	156	163	176	181	187	201	257	301	366
Total	1157	1743	1789	1472	1576	1686	1711	1748	1820	2063	2199	2398

**Lower growth scenario: Broadland summary indicators**

	2001	2002	2003	2004	2005	2006	2007	2008	2010	2017	2021	2026
<b>Demography</b>												
Population (000s)	118.8	119.3	120.3	120.9	121.5	122.2	123.0	123.9	125.5	129.7	131.9	134.8
Working age population (000s)	72.2	72.4	72.9	73.0	73.4	73.6	74.5	75.4	76.9	82.1	84.2	88.0
Total net migration (000s)	1.2	0.9	1.2	0.8	0.9	0.9	1.0	1.0	0.9	0.6	0.6	0.7
<b>Labour market</b>												
Total employees in employment (000s)	36.4	34.4	40.5	42.2	40.6	40.8	40.5	40.5	40.4	39.7	38.8	37.8
Self employed (000s)	7.9	7.1	9.3	10.1	8.6	9.3	9.5	9.5	9.5	9.4	9.1	9.0
Total employment - jobs (000s)	44.3	41.5	49.8	52.2	49.1	50.0	49.9	49.9	49.9	49.1	48.0	46.8
Total employment - people (000s)	39.2	36.7	43.7	46.0	43.6	44.4	44.2	44.2	44.1	43.3	42.2	41.1
Residence based employment (000s)	58.0	57.2	56.6	57.6	59.9	61.5	61.2	61.3	61.5	61.5	60.8	60.3
Residence based employment rate (%)	67.2	65.9	64.8	65.6	67.9	69.3	68.5	68.1	67.3	65.5	63.8	62.4
Net commuting (000s)	-18.8	-20.5	-13.0	-11.7	-16.4	-17.1	-17.0	-17.0	-17.3	-18.2	-18.5	-19.2
Claimant unemployment (000s)	0.8	0.8	0.8	0.7	0.8	0.9	0.8	0.9	1.2	1.3	1.4	1.6
Claimant unemployment rate (%)	1.2	1.0	1.0	1.0	1.1	1.2	1.1	1.3	1.6	1.6	1.6	1.9
<b>Output</b>												
Total GVA (£m, 2003 prices)	1145	1157	1743	1789	1472	1576	1686	1711	1785	2029	2164	2355
Relative productivity (East=100)	85.2	91.5	113.1	106.6	91.5	95.3	100.2	100.1	100.4	100.8	101.1	101.4
<b>Housing</b>												
Households (000s)	50.0	50.6	51.1	51.4	51.6	51.9	52.5	53.2	54.4	58.5	60.9	63.6
Demand for dwellings (000s)	51.4	52.1	52.5	52.8	53.0	53.3	54.0	54.6	55.9	60.1	62.5	65.3
House prices (£)	89900	107100	131100	154600	170000	179100	192700	215300	221300	344400	398933	461242

**Lower growth scenario: South Norfolk Employees in Employment (000s)**

	2001	2002	2003	2004	2005	2006	2007	2008	2010	2017	2021	2026
Agriculture	1.8	1.7	1.6	1.5	1.5	1.3	1.3	1.3	1.2	0.8	0.7	0.6
Extraction	0.1	0.1	0.1	0.1	0.1	0.1	0.1	0.1	0.1	0.0	0.0	0.0
Food, drink & tobacco	0.9	0.8	0.7	0.5	0.6	0.5	0.5	0.4	0.3	0.1	0.1	0.0
Other low tech	0.5	0.7	0.7	0.5	0.7	0.7	0.6	0.6	0.5	0.4	0.3	0.2
Metals & engineering	2.2	2.7	2.6	2.7	2.4	2.4	2.3	2.2	2.0	1.4	1.1	0.9
Chemicals & process industries	0.4	0.5	0.4	0.9	0.8	0.8	0.8	0.7	0.7	0.6	0.6	0.5
Other and recycling	0.2	0.3	0.3	0.3	0.4	0.3	0.3	0.3	0.3	0.2	0.2	0.1
Utilities	0.3	0.2	0.2	0.1	0.1	0.1	0.1	0.1	0.1	0.1	0.0	0.0
Construction	3.5	2.9	3.4	2.9	2.8	2.8	2.7	2.7	2.7	2.6	2.4	2.2
Wholesale & distribution of motor vehicles	2.0	2.9	2.6	3.0	2.9	2.9	2.9	2.9	2.9	2.9	2.8	2.8
Retailing	3.2	3.7	3.6	3.9	3.8	3.8	3.9	4.0	4.1	4.4	4.6	4.7
Hotels & catering	2.1	2.0	2.2	2.2	2.2	2.1	2.1	2.1	2.2	2.6	2.8	3.1
Air Transport	0.0	0.0	0.0	0.0	0.0	0.0	0.0	0.0	0.0	0.0	0.0	0.0
Communications	0.1	0.2	0.3	0.4	0.5	0.5	0.5	0.5	0.5	0.5	0.5	0.4
Land and other transport	0.5	0.7	0.9	0.9	1.0	1.0	1.0	1.0	1.0	1.0	1.0	1.0
Water transport	0.0	0.0	0.0	0.0	0.0	0.0	0.0	0.0	0.0	0.0	0.0	0.0
Finance	0.3	0.3	0.4	0.4	0.4	0.4	0.3	0.4	0.3	0.3	0.3	0.3
Business services - computer related	0.3	0.4	0.4	0.4	0.5	0.5	0.5	0.5	0.6	0.7	0.7	0.7
Business services - labour recruitment, security and	0.3	0.3	0.6	0.7	0.6	0.6	0.6	0.6	0.6	0.7	0.7	0.7
Business services - other including call centres	0.3	0.5	0.4	0.4	0.6	0.6	0.6	0.6	0.7	0.7	0.7	0.7
Business services - R&D, technical testing	0.9	0.9	1.0	0.9	0.9	0.9	0.8	0.8	0.8	0.8	0.7	0.6
Business services - real estate and renting	0.5	0.6	0.8	0.8	0.9	1.0	1.0	1.0	1.0	1.2	1.3	1.3
Business services - other tradable	2.1	2.0	2.1	2.0	2.4	2.5	2.5	2.5	2.6	2.7	2.6	2.4
Public admin	0.5	1.3	1.5	1.5	1.6	1.6	1.6	1.6	1.6	1.6	1.6	1.6
Education	2.7	3.1	3.0	3.0	3.4	3.5	3.5	3.6	3.7	4.0	4.1	4.2
Health	3.0	7.9	8.5	9.2	10.1	10.3	10.6	10.8	11.1	11.8	12.2	12.8
Other personal services - miscellaneous	1.1	1.4	1.5	1.2	1.6	1.7	1.6	1.6	1.6	1.5	1.5	1.4
Other personal services - waste services	0.2	0.3	0.2	0.1	0.2	0.2	0.3	0.3	0.3	0.2	0.2	0.2
<b>Total</b>	<b>30.0</b>	<b>38.3</b>	<b>39.9</b>	<b>40.5</b>	<b>42.9</b>	<b>43.1</b>	<b>43.1</b>	<b>43.3</b>	<b>43.6</b>	<b>43.9</b>	<b>43.7</b>	<b>43.6</b>

Lower growth scenario: South Norfolk GVA (£m, 2003 prices)

	2001	2002	2003	2004	2005	2006	2007	2008	2010	2017	2021	2026
Agriculture	82	81	79	83	81	78	76	75	74	69	66	63
Extraction	5	5	4	4	4	4	4	4	4	3	3	3
Food, drink & tobacco	39	36	29	34	32	28	26	24	19	10	6	0
Other low tech	30	31	26	35	33	32	31	31	29	24	21	18
Metals & engineering	89	98	115	109	112	110	109	109	108	100	97	93
Chemicals & process industries	23	22	50	49	53	52	53	55	58	65	68	73
Other and recycling	8	9	10	13	14	13	13	13	12	10	9	8
Utilities	22	17	20	14	13	12	12	12	13	14	15	17
Construction	156	208	194	186	182	182	185	188	194	210	217	227
Wholesale & distribution of motor vehicles	97	97	124	119	121	123	125	128	134	150	162	180
Retailing	65	67	81	83	84	86	89	92	98	121	136	158
Hotels & catering	28	34	36	38	39	40	42	44	49	69	79	94
Air Transport	0	0	0	0	0	0	0	0	0	0	0	0
Communications	10	16	21	31	31	32	34	35	38	47	51	57
Land and other transport	29	38	38	44	46	46	47	47	48	52	55	59
Water transport	2	2	2	4	4	4	4	4	4	3	3	3
Finance	12	19	23	25	24	25	26	26	27	30	31	32
Business services - computer related	11	13	15	19	20	20	21	22	23	28	32	37
Business services - labour recruitment, security and	3	6	8	7	7	9	10	11	12	16	17	19
Business services - other including call centres	9	8	9	13	14	19	19	21	23	31	33	35
Business services - R&D, technical testing	17	22	20	20	20	21	21	22	22	24	25	25
Business services - real estate and renting	68	92	92	108	120	120	124	128	136	161	168	178
Business services - other tradable	53	57	58	71	73	61	64	67	73	89	90	91
Public admin	42	47	52	57	55	54	55	56	59	69	77	89
Education	70	68	72	81	81	79	81	83	88	107	118	134
Health	169	190	214	236	238	245	254	264	287	386	460	573
Other personal services - miscellaneous	48	55	50	67	69	66	66	67	69	75	80	85
Other personal services - waste services	8	6	5	9	10	10	10	10	10	12	12	13
Adjustment for financial services	53	71	87	98	115	119	121	126	138	187	215	255
Ownership of dwelling	147	157	165	171	171	175	180	187	202	263	310	382
Total	1292	1429	1524	1633	1635	1629	1662	1698	1775	2053	2228	2488

### Lower growth scenario: South Norfolk summary indicators

	2001	2002	2003	2004	2005	2006	2007	2008	2010	2017	2021	2026
<b>Demography</b>												
Population (000s)	110.8	112.4	113.7	114.7	115.7	116.2	117.6	119.1	121.3	127.5	130.8	135.1
Working age population (000s)	66.9	67.8	68.3	68.5	68.9	68.9	70.2	71.4	73.3	79.1	81.8	86.0
Total net migration (000s)	0.9	1.7	1.5	1.2	1.1	0.6	1.4	1.5	1.0	0.8	0.8	0.8
<b>Labour market</b>												
Total employees in employment (000s)	30.0	38.3	39.9	40.5	42.9	43.1	43.1	43.3	43.6	43.9	43.7	43.6
Self employed (000s)	8.6	9.6	11.1	10.8	10.6	11.4	11.5	11.5	11.5	11.1	10.7	10.3
Total employment - jobs (000s)	38.6	47.9	51.0	51.4	53.4	54.6	54.5	54.7	55.0	55.0	54.4	53.9
Total employment - people (000s)	39.9	46.2	49.3	49.8	51.5	52.6	52.5	52.7	52.9	52.6	51.9	51.2
Residence based employment (000s)	52.6	51.8	53.3	55.0	58.6	60.2	60.1	60.2	60.6	60.9	60.5	60.3
Residence based employment rate (%)	65.9	64.1	65.1	66.6	70.3	71.9	70.9	70.2	69.2	66.5	64.4	62.7
Net commuting (000s)	-12.7	-5.6	-4.0	-5.2	-7.1	-7.6	-7.5	-7.5	-7.7	-8.3	-8.5	-9.0
Claimant unemployment (000s)	0.8	0.8	0.8	0.7	0.8	0.9	0.8	1.2	1.5	1.7	1.7	2.0
Claimant unemployment rate (%)	1.2	1.1	1.1	1.0	1.2	1.3	1.2	1.7	2.1	2.1	2.1	2.3
<b>Output</b>												
Total GVA (£m, 2003 prices)	1090	1292	1429	1524	1633	1635	1629	1662	1738	2011	2182	2430
Relative productivity (East=100)	93.0	88.6	90.6	92.3	93.5	90.6	88.6	88.7	88.5	89.2	89.8	91.0
<b>Housing</b>												
Households (000s)	46.8	47.2	47.7	48.1	48.4	48.8	49.5	50.3	51.7	56.3	58.9	62.1
Demand for dwellings (000s)	48.6	49.0	49.5	49.9	50.2	50.6	51.4	52.2	53.7	58.4	61.1	64.4
House prices (£)	97300	114700	143400	164300	184700	196300	205900	213900	220600	345700	404380	474144

## 6 RSS Dwellings Scenario Summary Tables

Dwellings scenario: Norwich Employees in Employment (000s)

	2001	2002	2003	2004	2005	2006	2007	2008	2010	2017	2021
Agriculture	0.0	0.0	0.0	0.0	0.0	0.0	0.0	0.0	0.0	0.0	0.0
Extraction	0.1	0.1	0.1	0.1	0.1	0.1	0.1	0.1	0.1	0.1	0.0
Food, drink & tobacco	0.8	0.7	0.8	0.8	0.9	1.0	1.0	1.1	1.1	1.4	1.4
Other low tech	3.8	3.1	3.4	2.9	2.9	2.8	2.7	2.6	2.4	1.9	1.6
Metals & engineering	3.2	2.7	2.5	2.2	2.3	2.3	2.2	2.1	1.9	1.3	1.0
Chemicals & process industries	2.5	1.8	3.0	2.5	1.8	1.8	1.8	1.8	1.8	1.8	1.7
Other and recycling	0.3	0.3	0.3	0.2	0.2	0.2	0.3	0.3	0.3	0.3	0.3
Utilities	0.2	0.1	0.1	0.0	0.0	0.0	0.0	0.0	0.0	0.0	0.0
Construction	3.0	3.5	3.6	4.0	3.7	3.9	3.6	3.7	3.8	4.4	4.6
Wholesale & distribution of motor vehicles	5.8	5.7	5.4	5.6	5.2	5.3	5.1	5.1	5.1	5.2	5.2
Retailing	11.2	11.8	11.7	12.3	12.5	12.5	12.7	12.9	13.0	13.3	13.4
Hotels & catering	5.1	5.0	5.0	4.8	4.9	4.7	4.7	4.7	4.9	5.3	5.5
Air Transport	0.2	0.1	0.1	0.1	0.2	0.2	0.2	0.2	0.2	0.3	0.3
Communications	1.6	2.0	1.6	1.6	1.9	1.9	1.8	1.8	1.8	1.6	1.5
Land and other transport	2.3	3.1	2.7	2.7	2.8	2.8	2.6	2.6	2.6	2.6	2.6
Water transport	0.0	0.0	0.0	0.0	0.0	0.0	0.0	0.0	0.0	0.0	0.0
Finance	10.6	11.6	11.8	11.3	11.2	11.1	10.8	10.5	9.9	8.0	6.8
Bus. serv. - computer related	0.8	0.6	0.7	0.5	0.5	0.6	0.6	0.6	0.6	0.7	0.7
Bus. serv. - labour recruitment, security and cleani	5.6	6.4	5.9	5.9	6.2	6.3	6.0	6.3	6.5	7.1	7.1
Bus. serv. - other including call centres	1.0	1.5	1.2	1.2	0.8	0.9	1.0	1.0	1.1	1.6	1.7
Bus. serv. - R&D, technical testing	0.1	0.1	0.1	0.1	0.1	0.1	0.2	0.2	0.2	0.2	0.2
Bus. serv. - real estate and renting	1.4	4.7	1.5	1.5	6.0	1.9	1.8	1.8	1.9	2.3	2.3
Bus. serv. - other tradable	3.5	3.7	3.9	3.7	4.4	4.7	4.5	4.5	4.8	5.7	6.0
Public admin	5.1	5.1	4.1	4.8	5.7	4.9	4.9	4.9	4.9	4.8	4.8
Education	8.6	8.0	7.7	7.1	7.6	7.8	7.9	8.1	8.2	8.5	8.7
Health	11.0	5.8	5.7	6.3	6.5	6.6	6.8	6.9	7.0	7.2	7.3
Other personal services - miscellaneous	4.1	4.4	4.4	4.4	4.5	4.7	4.6	4.6	4.7	4.8	4.8
Other personal services - waste services	0.2	0.2	0.2	0.1	0.1	0.1	0.1	0.1	0.1	0.1	0.1
Total	91.9	92.2	87.3	87.0	93.2	89.1	88.0	88.2	88.9	90.2	89.7

**Dwellings scenario: Norwich GVA (£m, 2003 prices)**

	2001	2002	2003	2004	2005	2006	2007	2008	2010	2017	2021	2026
Agriculture	0	1	1	1	1	1	1	1	1	2	2	2
Extraction	6	7	5	5	5	4	4	4	4	3	3	3
Food, drink & tobacco	34	39	38	47	52	54	58	62	71	99	115	134
Other low tech	122	128	117	121	116	115	114	114	112	103	99	93
Metals & engineering	82	82	82	89	92	90	89	88	87	78	74	69
Chemicals & process industries	81	139	128	99	109	109	114	120	130	164	185	210
Other and recycling	7	7	6	7	8	8	8	8	9	10	10	11
Utilities	15	11	7	7	5	4	4	3	2	1	0	0
Construction	138	147	174	162	164	157	162	168	183	238	274	330
Wholesale & distribution of motor vehicles	175	171	192	183	189	184	186	191	202	237	261	299
Retailing	190	191	214	231	235	242	248	255	268	315	346	388
Hotels & catering	66	67	69	74	75	78	80	84	91	119	132	149
Air Transport	6	6	7	10	10	11	12	13	16	27	33	43
Communications	89	72	75	96	94	99	103	107	114	133	139	148
Land and other transport	116	97	96	104	108	103	104	105	106	114	118	125
Water transport	0	0	0	0	0	0	0	0	0	0	0	0
Finance	471	519	577	611	648	677	677	680	675	628	603	665
Business services - computer related	14	19	15	16	17	18	18	19	20	24	27	31
Business services - labour recruitment, security and	51	49	51	58	62	79	84	89	99	133	142	155
Business services - other including call centres	24	20	23	15	16	23	25	28	33	56	67	81
Business services - R&D, technical testing	1	2	2	3	3	3	3	3	3	4	4	5
Business services - real estate and renting	459	148	152	616	193	182	187	191	203	240	249	265
Business services - other tradable	86	87	86	103	108	88	92	98	112	158	172	193
Public admin	154	119	144	179	151	150	152	154	160	187	207	234
Education	168	156	149	157	156	155	156	160	168	201	220	245
Health	113	110	124	128	129	134	139	143	154	201	235	286
Other personal services - miscellaneous	120	122	124	129	135	132	134	137	143	168	187	213
Other personal services - waste services	6	4	3	4	4	4	4	4	4	4	4	5
Adjustment for financial services	143	171	166	183	245	220	226	235	258	349	395	473
Ownership of dwelling	160	161	165	171	176	179	184	191	204	261	305	370
<b>Total</b>	<b>2812</b>	<b>2511</b>	<b>2661</b>	<b>3240</b>	<b>2817</b>	<b>2865</b>	<b>2917</b>	<b>2985</b>	<b>3116</b>	<b>3560</b>	<b>3818</b>	<b>4278</b>

**Dwellings scenario: Norwich summary indicators**

	2001	2002	2003	2004	2005	2006	2007	2008	2010	2017	2021	2026
<b>Demography</b>												
Population (000s)	122.4	122.8	123.8	125.0	127.1	129.5	130.4	131.7	133.1	137.1	139.4	141.8
Working age population (000s)	79.6	81.0	82.2	83.9	86.0	88.3	88.7	89.3	89.4	90.2	90.1	90.4
Total net migration (000s)	0.6	0.5	0.8	0.9	1.8	2.0	0.4	0.7	-0.1	0.1	0.0	0.3
<b>Labour market</b>												
Total employees in employment (000s)	91.9	92.2	87.3	87.0	93.2	89.1	88.0	88.2	88.9	90.2	89.7	90.0
Self employed (000s)	8.1	8.6	8.6	9.0	8.8	8.9	9.0	9.0	9.2	9.5	9.4	9.6
Total employment - jobs (000s)	100.0	100.8	96.0	96.0	102.0	98.1	97.0	97.3	98.1	99.7	99.1	99.6
Total employment - people (000s)	92.6	92.6	89.0	89.4	94.2	90.5	89.4	89.6	90.3	91.6	90.9	91.2
Residence based employment (000s)	53.6	52.9	54.6	56.1	59.4	61.2	60.8	60.9	61.2	61.7	61.2	61.2
Residence based employment rate (%)	59.7	58.3	59.2	60.0	62.0	62.5	61.5	61.0	60.4	58.8	57.2	56.3
Net commuting (000s)	39.0	39.7	34.4	33.3	34.9	29.3	28.6	28.7	29.1	29.9	29.7	30.0
Claimant unemployment (000s)	2.7	2.5	2.5	2.5	2.7	2.9	2.7	3.1	3.7	3.5	3.6	3.5
Claimant unemployment rate (%)	3.4	3.0	3.1	2.9	3.1	3.3	3.0	3.5	4.1	3.8	4.0	3.8
<b>Output</b>												
Total GVA (£m, 2003 prices)	2622	2812	2511	2661	3240	2817	2865	2917	3055	3499	3738	4174
Relative productivity (East=100)	86.3	91.6	84.5	86.2	97.1	86.9	87.7	87.6	87.3	85.5	84.5	84.4
<b>Housing</b>												
Households (000s)	54.7	55.1	55.6	55.9	56.7	57.5	58.4	59.4	61.0	65.9	68.6	71.5
Demand for dwellings (000s)	57.1	57.5	58.1	58.3	59.1	60.0	60.9	62.0	63.6	68.8	71.5	74.5
House prices (£)	73300	85400	110600	127400	142100	151100	162300	172200	178500	278900	322200	380100



## Broadland summary tables

### Dwellings scenario: Broadland Employees in Employment (000s)

	2001	2002	2003	2004	2005	2006	2007	2008	2010	2017	2021	2026
Agriculture	1.2	1.2	1.1	1.1	1.0	0.9	0.9	0.9	0.8	0.6	0.5	0.5
Extraction	0.0	0.0	0.0	0.0	0.0	0.0	0.0	0.0	0.0	0.0	0.0	0.0
Food, drink & tobacco	2.5	2.7	2.8	2.7	2.5	2.5	2.5	2.4	2.3	1.9	1.6	1.4
Other low tech	0.7	0.7	0.8	0.6	0.8	0.8	0.7	0.7	0.7	0.5	0.4	0.4
Metals & engineering	2.6	2.4	1.9	2.1	2.1	2.1	2.0	2.0	1.8	1.3	1.1	0.9
Chemicals & process industries	0.9	1.0	1.2	1.4	1.1	1.1	1.0	1.0	1.0	0.8	0.7	0.6
Other and recycling	0.3	0.3	0.3	0.3	0.4	0.4	0.4	0.4	0.3	0.3	0.3	0.2
Utilities	0.0	0.0	0.0	0.0	0.0	0.0	0.0	0.0	0.0	0.0	0.0	0.0
Construction	2.8	1.9	2.5	3.1	2.9	2.9	2.8	2.9	3.0	3.1	3.1	3.1
Wholesale & distribution of motor vehicles	3.0	3.1	2.9	2.8	3.2	3.2	3.3	3.2	3.2	2.9	2.7	2.6
Retailing	4.0	4.1	4.1	4.3	4.3	4.3	4.4	4.4	4.4	4.5	4.4	4.4
Hotels & catering	2.1	1.6	2.3	2.3	2.3	2.2	2.2	2.2	2.3	2.5	2.6	2.8
Air Transport	0.0	0.0	0.0	0.0	0.0	0.0	0.0	0.0	0.0	0.0	0.0	0.0
Communications	0.9	1.0	0.9	0.9	1.1	1.1	1.1	1.1	1.1	1.0	0.9	0.9
Land and other transport	0.6	0.6	1.1	1.1	0.6	0.7	0.7	0.7	0.7	0.6	0.6	0.6
Water transport	0.0	0.0	0.1	0.0	0.0	0.0	0.0	0.0	0.0	0.0	0.0	0.0
Finance	0.3	0.3	0.3	0.3	2.4	2.3	2.2	2.2	2.2	2.2	2.1	2.0
Business services - computer related	0.3	0.3	0.3	0.2	0.3	0.3	0.3	0.3	0.3	0.3	0.3	0.2
Business services - labour recruitment, security and	1.0	0.7	0.8	1.0	1.0	1.0	1.0	1.0	1.1	1.1	1.1	1.1
Business services - other including call centres	0.3	0.4	0.4	0.4	0.4	0.4	0.4	0.4	0.4	0.5	0.5	0.5
Business services - R&D, technical testing	0.0	0.0	0.0	0.0	0.1	0.1	0.1	0.1	0.1	0.1	0.1	0.1
Business services - real estate and renting	0.9	0.9	5.0	5.5	1.2	1.3	1.3	1.3	1.4	1.6	1.6	1.6
Business services - other tradable	0.8	0.8	0.9	0.9	1.6	1.6	1.6	1.6	1.7	1.8	1.8	1.7
Public admin	1.4	1.1	1.0	1.3	1.4	1.4	1.4	1.4	1.4	1.4	1.4	1.4
Education	2.6	3.0	3.1	3.0	3.2	3.3	3.3	3.4	3.5	3.7	3.9	4.0
Health	5.8	4.7	5.0	5.5	5.2	5.2	5.3	5.3	5.4	5.3	5.3	5.2
Other personal services - miscellaneous	1.2	1.4	1.4	1.1	1.4	1.4	1.4	1.4	1.4	1.5	1.5	1.6
Other personal services - waste services	0.2	0.3	0.3	0.1	0.2	0.2	0.2	0.2	0.2	0.2	0.2	0.2
Total	36.4	34.4	40.5	42.2	40.6	40.8	40.5	40.5	40.4	39.7	38.8	37.8

**Dwellings scenario: Broadland GVA (£m, 2003 prices)**

	2001	2002	2003	2004	2005	2006	2007	2008	2010	2017	2021	2026
Agriculture	52	51	49	48	48	50	49	49	49	49	49	48
Extraction	0	0	0	0	0	0	0	0	0	0	0	0
Food, drink & tobacco	125	134	130	128	135	140	141	141	142	138	134	129
Other low tech	27	32	27	33	33	35	35	35	34	33	31	30
Metals & engineering	73	65	80	80	86	91	92	93	94	94	94	95
Chemicals & process industries	44	59	69	59	65	68	69	71	73	79	81	84
Other and recycling	8	8	8	12	13	13	13	13	13	12	12	11
Utilities	0	0	0	0	0	0	0	0	0	0	0	0
Construction	94	133	174	158	163	176	181	186	196	234	257	291
Wholesale & distribution of motor vehicles	97	99	99	115	121	131	131	133	136	143	149	158
Retailing	67	71	78	81	85	92	94	96	100	116	126	139
Hotels & catering	21	32	33	34	36	40	41	43	47	63	70	80
Air Transport	0	0	0	1	1	2	2	2	2	1	1	0
Communications	47	47	47	60	61	68	70	73	78	91	95	102
Land and other transport	24	43	44	25	27	29	30	30	31	33	34	35
Water transport	5	8	7	11	15	15	15	15	15	15	15	15
Finance	10	14	17	131	136	151	156	160	167	193	204	217
Business services - computer related	6	9	8	9	10	10	10	11	11	11	11	12
Business services - labour recruitment, security and	6	8	10	10	11	15	16	17	19	25	26	28
Business services - other including call centres	7	7	7	8	8	12	12	13	15	20	21	22
Business services - R&D, technical testing	0	0	0	1	1	2	2	2	2	2	2	2
Business services - real estate and renting	92	556	579	125	145	153	157	161	169	193	197	203
Business services - other tradable	20	23	23	39	42	38	39	41	45	56	58	59
Public admin	31	29	39	43	44	46	47	47	50	58	65	75
Education	62	65	64	66	68	71	72	74	79	96	107	122
Health	95	104	111	104	108	117	120	123	131	164	186	219
Other personal services - miscellaneous	44	47	36	46	50	52	53	54	57	69	77	90
Other personal services - waste services	8	8	3	5	6	6	6	6	7	8	9	10
Adjustment for financial services	57	63	107	118	106	113	124	129	141	188	212	245
Ownership of dwelling	147	155	154	156	163	176	181	187	201	257	301	366
<b>Total</b>	<b>1157</b>	<b>1743</b>	<b>1789</b>	<b>1472</b>	<b>1576</b>	<b>1686</b>	<b>1711</b>	<b>1748</b>	<b>1820</b>	<b>2063</b>	<b>2199</b>	<b>2398</b>

### Dwellings scenario: Broadland summary indicators

	2001	2002	2003	2004	2005	2006	2007	2008	2010	2017	2021	2026
<b>Demography</b>												
Population (000s)	118.8	119.3	120.3	120.9	121.5	122.2	123.0	123.9	125.5	129.7	131.9	134.8
Working age population (000s)	72.2	72.4	72.9	73.0	73.4	73.6	74.5	75.4	76.9	82.1	84.2	88.0
Total net migration (000s)	1.2	0.9	1.2	0.8	0.9	0.9	1.0	1.0	0.9	0.6	0.6	0.7
<b>Labour market</b>												
Total employees in employment (000s)	36.4	34.4	40.5	42.2	40.6	40.8	40.5	40.5	40.4	39.7	38.8	37.8
Self employed (000s)	7.9	7.1	9.3	10.1	8.6	9.3	9.5	9.5	9.5	9.4	9.1	9.0
Total employment - jobs (000s)	44.3	41.5	49.8	52.2	49.1	50.0	49.9	49.9	49.9	49.1	48.0	46.8
Total employment - people (000s)	39.2	36.7	43.7	46.0	43.6	44.4	44.2	44.2	44.1	43.3	42.2	41.1
Residence based employment (000s)	58.0	57.2	56.6	57.6	59.9	61.5	61.2	61.3	61.5	61.5	60.8	60.3
Residence based employment rate (%)	67.2	65.9	64.8	65.6	67.9	69.3	68.5	68.1	67.3	65.5	63.8	62.4
Net commuting (000s)	-18.8	-20.5	-13.0	-11.7	-16.4	-17.1	-17.0	-17.0	-17.3	-18.2	-18.5	-19.2
Claimant unemployment (000s)	0.8	0.8	0.8	0.7	0.8	0.9	0.8	0.9	1.2	1.3	1.4	1.6
Claimant unemployment rate (%)	1.2	1.0	1.0	1.0	1.1	1.2	1.1	1.3	1.6	1.6	1.6	1.9
<b>Output</b>												
Total GVA (£m, 2003 prices)	1145	1157	1743	1789	1472	1576	1686	1711	1785	2029	2164	2355
Relative productivity (East=100)	85.2	91.5	113.1	106.6	91.5	95.3	100.2	100.1	100.4	100.8	101.1	101.4
<b>Housing</b>												
Households (000s)	50.0	50.6	51.1	51.4	51.6	51.9	52.5	53.2	54.4	58.5	60.9	63.6
Demand for dwellings (000s)	51.4	52.1	52.5	52.8	53.0	53.3	54.0	54.6	55.9	60.1	62.5	65.3
House prices (£)	89900	107100	131100	154600	170000	179100	192700	215300	221300	344400	398933	461242

South Norfolk summary tables

Dwellings scenario: South Norfolk Employees in Employment (000s)

	2001	2002	2003	2004	2005	2006	2007	2008	2010	2017	2021	2026
Agriculture	1.8	1.7	1.6	1.5	1.5	1.3	1.3	1.3	1.2	0.8	0.7	0.6
Extraction	0.1	0.1	0.1	0.1	0.1	0.1	0.1	0.1	0.1	0.0	0.0	0.0
Food, drink & tobacco	0.9	0.8	0.7	0.5	0.6	0.5	0.5	0.4	0.3	0.1	0.1	0.0
Other low tech	0.5	0.7	0.7	0.5	0.7	0.7	0.6	0.6	0.5	0.4	0.3	0.2
Metals & engineering	2.2	2.7	2.6	2.7	2.4	2.4	2.3	2.2	2.0	1.4	1.1	0.9
Chemicals & process industries	0.4	0.5	0.4	0.9	0.8	0.8	0.8	0.7	0.7	0.6	0.6	0.5
Other and recycling	0.2	0.3	0.3	0.3	0.4	0.3	0.3	0.3	0.3	0.2	0.2	0.1
Utilities	0.3	0.2	0.2	0.1	0.1	0.1	0.1	0.1	0.1	0.1	0.0	0.0
Construction	3.5	2.9	3.4	2.9	2.8	2.8	2.7	2.7	2.7	2.6	2.4	2.2
Wholesale & distribution of motor vehicles	2.0	2.9	2.6	3.0	2.9	2.9	2.9	2.9	2.9	2.9	2.8	2.8
Retailing	3.2	3.7	3.6	3.9	3.8	3.8	3.9	4.0	4.1	4.4	4.6	4.7
Hotels & catering	2.1	2.0	2.2	2.2	2.2	2.1	2.1	2.1	2.2	2.6	2.8	3.1
Air Transport	0.0	0.0	0.0	0.0	0.0	0.0	0.0	0.0	0.0	0.0	0.0	0.0
Communications	0.1	0.2	0.3	0.4	0.5	0.5	0.5	0.5	0.5	0.5	0.5	0.4
Land and other transport	0.5	0.7	0.9	0.9	1.0	1.0	1.0	1.0	1.0	1.0	1.0	1.0
Water transport	0.0	0.0	0.0	0.0	0.0	0.0	0.0	0.0	0.0	0.0	0.0	0.0
Finance	0.3	0.3	0.4	0.4	0.4	0.4	0.3	0.4	0.3	0.3	0.3	0.3
Business services - computer related	0.3	0.4	0.4	0.4	0.5	0.5	0.5	0.5	0.6	0.7	0.7	0.7
Business services - labour recruitment, security and	0.3	0.3	0.6	0.7	0.6	0.6	0.6	0.6	0.6	0.7	0.7	0.7
Business services - other including call centres	0.3	0.5	0.4	0.4	0.6	0.6	0.6	0.6	0.7	0.7	0.7	0.7
Business services - R&D, technical testing	0.9	0.9	1.0	0.9	0.9	0.9	0.8	0.8	0.8	0.8	0.7	0.6
Business services - real estate and renting	0.5	0.6	0.8	0.8	0.9	1.0	1.0	1.0	1.0	1.2	1.3	1.3
Business services - other tradable	2.1	2.0	2.1	2.0	2.4	2.5	2.5	2.5	2.6	2.7	2.6	2.4
Public admin	0.5	1.3	1.5	1.5	1.6	1.6	1.6	1.6	1.6	1.6	1.6	1.6
Education	2.7	3.1	3.0	3.0	3.4	3.5	3.5	3.6	3.7	4.0	4.1	4.2
Health	3.0	7.9	8.5	9.2	10.1	10.3	10.6	10.8	11.1	11.8	12.2	12.8
Other personal services - miscellaneous	1.1	1.4	1.5	1.2	1.6	1.7	1.6	1.6	1.6	1.5	1.5	1.4
Other personal services - waste services	0.2	0.3	0.2	0.1	0.2	0.2	0.3	0.3	0.3	0.2	0.2	0.2
Total	30.0	38.3	39.9	40.5	42.9	43.1	43.1	43.3	43.6	43.9	43.7	43.6

**Dwellings scenario: South Norfolk GVA (£m, 2003 prices)**

	2001	2002	2003	2004	2005	2006	2007	2008	2010	2017	2021	2026
Agriculture	82	81	79	83	81	78	76	75	74	69	66	63
Extraction	5	5	4	4	4	4	4	4	4	3	3	3
Food, drink & tobacco	39	36	29	34	32	28	26	24	19	10	6	0
Other low tech	30	31	26	35	33	32	31	31	29	24	21	18
Metals & engineering	89	98	115	109	112	110	109	109	108	100	97	93
Chemicals & process industries	23	22	50	49	53	52	53	55	58	65	68	73
Other and recycling	8	9	10	13	14	13	13	13	12	10	9	8
Utilities	22	17	20	14	13	12	12	12	13	14	15	17
Construction	156	208	194	186	182	182	185	188	194	210	217	227
Wholesale & distribution of motor vehicles	97	97	124	119	121	123	125	128	134	150	162	180
Retailing	65	67	81	83	84	86	89	92	98	121	136	158
Hotels & catering	28	34	36	38	39	40	42	44	49	69	79	94
Air Transport	0	0	0	0	0	0	0	0	0	0	0	0
Communications	10	16	21	31	31	32	34	35	38	47	51	57
Land and other transport	29	38	38	44	46	46	47	47	48	52	55	59
Water transport	2	2	2	4	4	4	4	4	4	3	3	3
Finance	12	19	23	25	24	25	26	26	27	30	31	32
Business services - computer related	11	13	15	19	20	20	21	22	23	28	32	37
Business services - labour recruitment, security and	3	6	8	7	7	9	10	11	12	16	17	19
Business services - other including call centres	9	8	9	13	14	19	19	21	23	31	33	35
Business services - R&D, technical testing	17	22	20	20	20	21	21	22	22	24	25	25
Business services - real estate and renting	68	92	92	108	120	120	124	128	136	161	168	178
Business services - other tradable	53	57	58	71	73	61	64	67	73	89	90	91
Public admin	42	47	52	57	55	54	55	56	59	69	77	89
Education	70	68	72	81	81	79	81	83	88	107	118	134
Health	169	190	214	236	238	245	254	264	287	386	460	573
Other personal services - miscellaneous	48	55	50	67	69	66	66	67	69	75	80	85
Other personal services - waste services	8	6	5	9	10	10	10	10	10	12	12	13
Adjustment for financial services	53	71	87	98	115	119	121	126	138	187	215	255
Ownership of dwelling	147	157	165	171	171	175	180	187	202	263	310	382
<b>Total</b>	<b>1292</b>	<b>1429</b>	<b>1524</b>	<b>1633</b>	<b>1635</b>	<b>1629</b>	<b>1662</b>	<b>1698</b>	<b>1775</b>	<b>2053</b>	<b>2228</b>	<b>2488</b>

### Dwellings scenario: South Norfolk summary indicators

	2001	2002	2003	2004	2005	2006	2007	2008	2010	2017	2021	2026
<b>Demography</b>												
Population (000s)	110.8	112.4	113.7	114.7	115.7	116.2	117.6	119.1	121.3	127.5	130.8	135.1
Working age population (000s)	66.9	67.8	68.3	68.5	68.9	68.9	70.2	71.4	73.3	79.1	81.8	86.0
Total net migration (000s)	0.9	1.7	1.5	1.2	1.1	0.6	1.4	1.5	1.0	0.8	0.8	0.8
<b>Labour market</b>												
Total employees in employment (000s)	30.0	38.3	39.9	40.5	42.9	43.1	43.1	43.3	43.6	43.9	43.7	43.6
Self employed (000s)	8.6	9.6	11.1	10.8	10.6	11.4	11.5	11.5	11.5	11.1	10.7	10.3
Total employment - jobs (000s)	38.6	47.9	51.0	51.4	53.4	54.6	54.5	54.7	55.0	55.0	54.4	53.9
Total employment - people (000s)	39.9	46.2	49.3	49.8	51.5	52.6	52.5	52.7	52.9	52.6	51.9	51.2
Residence based employment (000s)	52.6	51.8	53.3	55.0	58.6	60.2	60.1	60.2	60.6	60.9	60.5	60.3
Residence based employment rate (%)	65.9	64.1	65.1	66.6	70.3	71.9	70.9	70.2	69.2	66.5	64.4	62.7
Net commuting (000s)	-12.7	-5.6	-4.0	-5.2	-7.1	-7.6	-7.5	-7.5	-7.7	-8.3	-8.5	-9.0
Claimant unemployment (000s)	0.8	0.8	0.8	0.7	0.8	0.9	0.8	1.2	1.5	1.7	1.7	2.0
Claimant unemployment rate (%)	1.2	1.1	1.1	1.0	1.2	1.3	1.2	1.7	2.1	2.1	2.1	2.3
<b>Output</b>												
Total GVA (£m, 2003 prices)	1090	1292	1429	1524	1633	1635	1629	1662	1738	2011	2182	2430
Relative productivity (East=100)	93.0	88.6	90.6	92.3	93.5	90.6	88.6	88.7	88.5	89.2	89.8	91.0
<b>Housing</b>												
Households (000s)	46.8	47.2	47.7	48.1	48.4	48.8	49.5	50.3	51.7	56.3	58.9	62.1
Demand for dwellings (000s)	48.6	49.0	49.5	49.9	50.2	50.6	51.4	52.2	53.7	58.4	61.1	64.4
House prices (£)	97300	114700	143400	164300	184700	196300	205900	213900	220600	345700	404380	474144